

**May 2014**

# **Assessment of Renewable Energy Sources Potential in the Cross- Border Region Bulgaria – FYROM by Components**

## **Report on Activity 3**

**Reference Number  
No 2007CB16IPO007-2011-2-89-2  
Revision 0**

**PROJECT:**

**Valorization of Renewable Energy Sources in the Cross-Border Area**

**Project No. 2007CB16IPO007-2011-2-89**

**SECTION:**

**Report on Activity 3**

**TEAM:**

**Inteladvisers, Ltd.**

**CLIENT:**

**ZRNOVCI MUNICIPALITY, FORMER YUGOSLAV REPUBLIC OF MACEDONIA**

<b>AUTHORS</b>	<b>ENDORSED BY</b>
Dipl. Eng. Maria Mihaylova Dipl. Eng. Valentin Atanasov Dipl. Eng. Romyana Stoyanova	Teodora Pavlova

## Control over modifications

### Version 0

--

Amendments in documentation						
№	DATE	Prepared by	Description of amendment	Reason of amendment	Checked by	Endorsed by
1.						
2.						
3.						

## CONTENTS

<b>1</b>	<b>PREAMBLE .....</b>	<b>1</b>
<b>2</b>	<b>Description of the subject of the research .....</b>	<b>1</b>
2.1	Basic definitions .....	2
2.1.1	Types of RES.....	2
<b>3</b>	<b>. BELITSA MUNICIPALITY .....</b>	<b>7</b>
2.1	SUMMARY .....	7
3.1.1	Natural Resources.....	8
3.2	ENERGY FROM WATER SOURCES.....	12
3.2.1	Description of the subject of the research.....	12
3.2.2	Assessment of the area.....	12
3.2.3	Evaluation of the resource.....	13
3.2.4	Evaluation of the potential .....	16
3.2.5	Technologies for utilization of the evaluated resource potential.....	18
3.2.6	Forecast annual production of energy on the basis of the recommended technology.....	21
3.2.7	Risk assessment .....	21
3.2.8	Evaluation of information reliability .....	22
3.3	ENERGY FROM BIOMASS.....	23
3.3.1	Assessment of the area.....	23
3.3.2	Evaluation of the resource.....	23
3.3.3	Evaluation of the potential .....	23
3.3.4	Technologies for utilization of the evaluated resource potential.....	24
3.3.5	Forecast annual production of energy.....	24
3.3.6	Risk assessment .....	25
3.3.1	Evaluation of information reliability .....	26
3.4	SOLAR ENERGY .....	26
3.4.1	Assessment of the area.....	26
3.4.2	Evaluation of the resource.....	30
3.4.3	Evaluation of the potential .....	31
3.4.4	Technologies for utilization of the evaluated resource potential.....	32
3.4.5	Forecast annual production of energy.....	32
3.4.6	Risk assessment .....	33
3.4.7	Evaluation of information reliability .....	35
3.5	WIND ENERGY .....	35
3.5.1	Assessment of the area.....	35
3.5.2	Evaluation of the resource.....	37
3.5.3	Evaluation of the potential .....	37
3.5.4	Technologies for utilization of the evaluated resource potential.....	40
3.5.5	Forecast annual production of energy.....	42
3.5.6	Risk assessment .....	42

3.5.7	Evaluation of information reliability .....	44
3.6	ELECTRICAL CONNECTION OF NEW RES FACILITIES.....	44
3.6.1	Risk assessment .....	44
3.6.1.1	Risk assessment .....	44
3.6.1.2	Recommendations for management of risks;.....	45
<b>4</b>	<b>ZRNOVCI MUNICIPALITY.....</b>	<b>46</b>
4.1	General description.....	46
4.1.1	Natural Resources.....	47
4.2	ENERGY FROM WATER SOURCES.....	49
4.2.1	Description of the subject of the research.....	49
4.2.2	Assessment of the area.....	49
4.2.3	Evaluation of the resource.....	50
4.2.4	Evaluation of the potential .....	51
4.2.5	Technologies for utilization of the evaluated resource potential.....	52
4.2.6	Forecast annual production of energy.....	55
4.2.7	Risk assessment .....	55
4.2.8	Evaluation of information reliability .....	56
4.3	ENERGY FROM BIOMASS.....	57
4.3.1	Assessment of the area.....	57
4.3.2	Evaluation of the resource.....	58
4.3.3	Evaluation of the potential .....	58
4.3.4	Technologies for utilization of the evaluated resource potential.....	59
4.3.5	Forecast annual production of energy.....	60
4.3.6	Risk assessment .....	60
4.3.7	Evaluation of information reliability .....	61
4.4	SOLAR ENERGY .....	62
4.4.1	Assessment of the area.....	62
4.4.2	Evaluation of the resource.....	64
4.4.3	Evaluation of the potential .....	64
4.4.4	Technologies for utilization of the evaluated resource potential.....	65
4.4.5	Forecast annual production of energy.....	66
4.4.6	Risk assessment .....	66
4.4.7	Evaluation of information reliability .....	68
4.5	WIND ENERGY .....	68
4.5.1	Assessment of the area.....	68
4.5.2	Evaluation of the resource.....	70
4.5.3	Evaluation of the potential .....	70
4.5.4	Technologies for utilization of the evaluated resource potential.....	71
4.5.5	Forecast annual production of energy.....	72
4.5.6	Risk assessment .....	72
4.5.7	Evaluation of information reliability .....	74
4.6	ELECTRICAL CONNECTION OF NEW RES FACILITIES.....	74

4.6.1	Risk assessment .....	75
4.6.1.1	Risk assessment .....	75
4.6.1.2	Recommendations for management of risks; .....	75
<b>5</b>	<b>REGULATORY FRAMEWORK AND REFERENCES.....</b>	<b>76</b>

## ANNEXES

- Annex 1. Maps of Belitsa Municipality and Zrnovci Municipality;
- Annex 2. Proposals for new HPPs in Belitsa Municipality and Zrnovci Municipality
- Annex 3. Condition of HPPs in Belitsa Municipality
- Annex 4. Theoretical data and calculations on the solar radiation in Belitsa Municipality
- Annex 5. Technologies for utilization of the assessed resource potential in Belitsa Municipality
- Annex 6. Tables of wind potential in Bulgaria
- Annex 7. Theoretical data and calculations on the solar radiation in Zrnovci Municipality
- Annex 8. Technologies for utilization of the assessed resource potential in Zrnovci Municipality

## LIST OF TABLES

Table 1.	Basic hydrological parameters of Belishka river
Table 2.	Basic hydrological parameters of Stankova river
Table 3.	Basic hydrological parameters of Votrachka river
Table 4.	Basic hydrological parameters of Babeshka river - estuary
Table 5	Range of use of the types of hydro turbines
Table 6	Types of risks related to HPP and their management
Table 7	Types of risks related to biomass and its management
Table 8	Types of risks related to photovoltaics and their management
Table 9	Average wind speed in m/s by bearings for the Belitsa station (936 ÷ 1000 m altitude)
Table 10	Wind classes
Table 11	Types of risks related to wind parks and their management
Table 12.	Basic hydrological parameters of Zrnovska river
Table 13	Range of use of the types of hydro turbines
Table 14	Types of risks related to HPP and their management
Table 15	Types of risks related to biomass and its management
Table 16	Types of risks related to photovoltaics and their management
Table 17	Wind classes

Table 18                      Types of risks related to wind parks and their management

## 1 PREAMBLE

The present report was elaborated based on Contract No. **№2007CB16IPO007-2011-2-89-2** signed between the CONTRACTING AUTHORITY **Zrnovci Municipality**, with seat and registered address: FYROM, b.b. Ilindenska Str., registration number 6010407, represented by the Mayor Mr. Blaze STANKOV, as one party, and INTELADVISERS LTD., with a seat and registered address in the city of Sofia, 229, Botevgradsko shosse Blvd, floor 3, UIN 200012741, listed in the Registry Agency represented by its Manager Teodora Ivanova Pavlova as the CONTRACTOR, as the other party.

The objective of this project is to promote the sustainable economic development and environmental awareness through valorization and effective use of Renewable Energy Sources in the region of Zrnovci municipality (FYROM) and Belitsa (Bulgaria).

## 2 DESCRIPTION OF THE SUBJECT OF THE RESEARCH

The development of this report aims to provide a more in-depth assessment of RES for the target region of both municipalities. The assessment includes field research of the region in which the project is being implemented, definition and analysis of renewable energy sources in this region, as well as their parameters; and definition and analysis of the available and forecast theoretical and technical potential of energy from renewable sources. The main parameters of RES have been shown, and the technologies have been reviewed, through which the assessed resource potential will be utilized. The forecast annual production of each RES have been provided, and a risk assessment has been carried out for each technology, while providing recommendations for management of the indicated risks.

Based on the checks carried out of the suitable areas in Zrnovci and Belitsa municipalities and based on the information gathered in the process, four types of RES have been defined: hydro energy, biomass, solar and wind energy. For convenience purposes, the report was developed in two main parts: the first one relating to Belitsa Municipality and the second one to Zrnovci Municipality, where for each municipality, for each type of RES, an assessment of the areas has been made, as well as assessment of the resource and potential; technologies have been indicated, as well as their parameters for utilization of the resource potential; the forecast annual energy production has been given; a risk assessment has been made and risk management methods have been suggested.

## 2.1 Basic definitions

### 2.1.1 Types of RES

Renewable Energy Sources encompass solar, wind, water, geothermal energy, as well as energy obtained from plant and animal biomass. Production of energy from RES is supported by Bulgarian and EU legislation. When a project based on using RES is implemented, purchasing of energy is guaranteed at preferential rates according to the regulations and decrees adopted. The different types of RES require specialized preparation and resources.

#### **Energy from water sources**

Hydro Power Plants (HPP) are a traditionally well-developed renewable source of energy. HPP produce energy through gravity of falling or running water. This is the most widespread energy form of RES across the world. Price of energy from RES is relatively low which makes it a competitive source of renewable energy. Additionally, HPP are a flexible source of energy being able to get charged or discharged very fast in order to respond to the ever changing needs for electricity. The main ecological issue with them is the damming of rivers where the obstruction of the river flow affects negatively the ecosystems along the river basin, while the construction of dams and reservoirs is often accompanied by displacement of people and livestock. Once constructed, HPP does not directly produce waste and has lower carbon footprint compared to the energy obtained from solid and liquid fuels.

#### **Biomass**

The term “biomass” is a generic term used in relation to organic matters of plant or animal origin that may be recycled, processed and used for production of energy. Most often it is being associated with plants or plant-based products called lignocellulose biomass. These are predominantly waste products of plant origin from wood processing, agriculture, food processing, household waste, the industry and others. As an energy source biomass can be used directly by burning to produce heat or indirectly after having been transformed into different forms of bio fuels. Transformation of biomass into biofuels is done via following methods: thermal, chemical and biochemical.

The decreasing reserves of primary energy sources and the ecological issues arising from their use are just some of the reasons that led to the search for alternative sources of energy and to the development of new technologies for their utilization. Being a part of the Renewable Energy Sources, biomass is among the energy vectors that, unlike a certain part of the other renewable, are well-known and widely used.

Among the main advantages of biomass compared to other Renewable Energy Sources is its capacity to directly turn into liquid fuels like biodiesel and ethanol, as well as its suitability for use in the production of biogas, especially in agricultural areas with large amounts of livestock.

Main sources of bio energy are wood and wood chips; beside the waste from wood processing, fast growing hardwood species are also used for the production of biomass. Normally these are specially selected wood varieties like hybrid ivy and poplar, maple, ash tree, walnut and plane trees which are good for use within five to eight years after planting. Waste from forestry includes also biomass which has not been collected or removed from clearings, as well as materials obtained by forest management activities like thinning or removal of dying trees. Solid and liquid wastes from agriculture are also sources of biomass. Out of the solid agriculture wastes, in the energy production mostly hay, corn stems, rice stems and others are used, with maize feed holding serious percentage. Liquid wastes from agriculture being mainly waste products from animal and poultry farms are also used in the production of biogas. Beside agriculture crops biomass includes also certain water cultures. These are predominantly some varieties of algae. Biomass includes

certain solid industrial wastes like oils and minerals of vegetal and animal origin, and some household waste containing a substantial quantity of organic matters obtained by plants represent a source of renewable energy.

Several main technologies are used for the utilization of biomass. Some of them are direct burning, parallel burning, gasification, pyrolysis and anaerobic assimilation. Parallel burning, gasification and anaerobic assimilation are technologies still having relatively limited application. They are suitable for use mainly in industrial environment. In parallel burning, the biomass is used as an additional resource of energy in highly effective coal-fired steam boilers. Gasification is related to the production of biogas used as a fuel in energy plants with combined production cycles. Anaerobic assimilation is a process in which methane and other secondary products are obtained. In this process organic matters are disintegrated by bacteria in oxygen-free medium. Undoubtedly, direct burning in furnaces and heaters is the easiest way of biomass utilization. The main disadvantage is its lower effectiveness due to temperature losses through their bodies or through exhaust gases.

Biogas is a fuel gas obtained through organized fermentation of biological products in anaerobic medium. Its basic composition is: 55%÷75% methane and 25%÷45% CO<sub>2</sub>. Calorific value of biogas is from 4,5 to 7,5 kWh/m<sup>3</sup>. One kilogram of methane equals 1,18 kilo of heavy oil, i.e. 1 m<sup>3</sup> of methane = 1 l of heavy oil. Out of 1 kilogram of biomass (as a dry substance) 200 l to 1.200 l of bio gas are obtained depending on the biomass composition and the conditions of fermentation.

Starting raw materials for the production of biogas are wastes produced by animal farms – grass, straw, leaves, pine needles, manure, feces, litter (mixture of feces and straw), wash waters, food and household waste. These materials contain organic and non-organic substances; thus, they are a suitable medium for the growth of various microorganisms. These materials represent a serious problem as they pile up in large quantities and pollute the environment. During their natural fermentation methane is being released which is a greenhouse gas and makes up 7% to 10% of the global methane pollution.

Main source for the production of bio diesel is rapeseed. There is a high demand for this product on European markets which makes it an inseparable part of the contemporary grain production. It flowers from 15<sup>th</sup> of April till 10<sup>th</sup> of May and is a good source of anther for bees.

Seeds of this plant contain from 40% to 52% slow-drying oil, up to 20% proteins and over 17% carbohydrates. Nutritional qualities of the rapeseed oil are defined by oil and acid composition and the content of A, E, K and D vitamins, phosphatides and tocopherols. Around 85% of rapeseed oil composition is essential fatty acids: 20% linoleic and 65% oleic acid. This makes it the most important among the plants rich in oils and proteins and it occupies the third place in the global production of vegetable oils and biofuel (diesel). Its waste products are oil cakes and groat. They contain around 33% of proteins and represent valuable forage for livestock. Groat from rapeseed oil is very close to the one from soy in terms of feed quality.

The rapeseeds grow slowly already at 1÷2 °C, while in spring they start to vegetate again at 3÷4 °C. Rapeseed is a plant of the long day. It develops greatly in mass and needs a lot of water, especially during buttonisation and flowering, as well as during the growth phase of pods. Seeds germinate upon having absorbed 80÷90% water of their mass. It is tolerate to various types of soils – black, alluvial, grey, cinnamon and brown forest soil. Most of the modern hybrids could be grown even on weaker soils in pre-mountainous areas where other cultures yield unsatisfactory results. Rapeseed requires neutral reaction of soil, but it develops well also with slightly acidic and slightly alkaline reaction of the soil at Ph 6÷7,5. Rapeseed growing technology is to be followed strictly.

Recommendable sowing density is 50÷80 seeds per m<sup>2</sup> so a yield of minimum 20÷30 plants per m<sup>2</sup> is secured.

Sowing standard depends on the relevant technology of rapeseed growing and varies from 0,4 to 0,9 kg/decare for the different varieties.

Calorific value of biodiesel is almost the same as of petrol diesel, 10,5 kWh/l and 11,6 kWh/l respectively. Rapeseed yield is approximately 1 170 kg/ha which results in production of 421 kg/ha of biodiesel.

The Paulownia grows at places up to 2 000 m altitude. An altitude of 750 – 800 m is recommendable for the plant cultivation with investment goal.

Growth of trees starts when soil temperature reaches 15 °C÷16 °C. Optimal temperature for growing of paulownia is in the range 24 °C÷33 °C.

Paulownia is highly adaptive to various soils and grows on a wide range of soils but it develops best in deep and well-drained soils.

Comparing its annual yield to those of poplar, willow or miscanthus it appears to be the most effective culture in our geographical area.

The main advantage of paulownia as energy yielding culture is its fast growth in the first 2 years of its life as well as the capacity of its root system to ensure forming of new plants on the spot of the cut stem. Seeds are sown in spring and in the end of the first vegetative period paulownia is cut to the ground level so formation of multitude of new stems during the following year is induced.

Growth during the following year is fast with the plant reaching 3-4 m height in the end of the year and 6-7 m in the second year when it is cut for processing of the biomass obtained in this way. Such a plantation has a life cycle of 20-25 years and is supposed to give 10-12 yields after which the ground can be used again for other purposes.

For the creation of forestry plantations, the following sowing density is recommended: 4x4, 4x5 or 5x5 m with 620÷500 trees/ha. Higher sowing density leads to slowing down of plants growth after the first 3-4 years. Lower sowing density produces much faster initial growth which results in lower quality of the wood material.

For an effective production of biomass trees are planted more densely than it is required in the production of wood material. Recommendable density of planting for production of biomass is between 350÷1000 trees/decare depending on the biomass harvesting technique, its follow-up use and the planting density.

Bioethanol is alcohol produced through fermentation of carbohydrates from sugar plants and cultures containing starch like sugar cane, corn, soya, sorghum, wheat etc. Beside that, for the production of bioethanol, cellulose biomass from non-alimentary products like wood, straw and others can be used as well. Bioethanol is directly used as a fuel for various vehicles being usually mixed with gasoline for improving its octane number thus decreasing its harmful emissions. Besides, its use does not require any changes or replacements of existing installations of inner combustion engines which does not lead to additional costs. Just like biodiesel, bioethanol is ecologically renewable fuel which EU has established as a compulsory ingredient of petrol fuels in recent years.

### **Solar energy**

Energy from sunlight is used in two ways: through transforming it into electricity or through transforming it into thermal energy for households and industry. Electricity from the sun is obtained through transformation of sunlight either directly through photovoltaic pannels or indirectly through concentrating and focusing of light through enormous quantity of tracking mirrors/lenses. Photovoltaics transform light into power through the so called photovoltaic effect. On the other hand, thermal energy is produced in special flat collectors with selective covering or vacuum pipe collectors which capture and retain the heat from ultraviolet and infrared rays and render it to a thermal carrier, usually antifreeze.

Photovoltaics are important and relatively cheap source of power in areas where either the site is inconvenient for connecting to the power network or it is unreasonably expensive, or if there is no connection point at all. As prices of photovoltaic panels are constantly dropping, and also due to the fact that they do not release any emissions, the interest towards this type of RES is increasing.

The limited working hours during the day, their dependence of the weather conditions, as well as the seasonal nature of the yield may be pointed as some of the main disadvantages. Their

life as a resource is also short, but with the progress of technologies this problem will weaken or disappear. Another disadvantage in terms of their principle of work is that power produced by photovoltaics is highly non-inertial which practically means that, for instance, switching from maximum to minimum power (in cloudy conditions) happens momentarily, without any delay. In the course of work these impulses lead to inconsistencies in the loads and to imbalances in the power system which is an unwanted effect.

Production of energy by photovoltaic power stations is directly influenced by the geographical position of the site, the daily dose of radiation reaching it and the index of transparency.

Solar energy is the energy that reaches a unit of surface for a unit of time. Measure unit is kWh/m<sup>2</sup> per day.

Index of transparency of air reflects the solar radiation reaching the Earth surface from the atmosphere which has a value of between 0 and 1.

High index of transparency means that the air has a high level of cleanliness and there are no obstacles for the solar radiation.

Geographical latitude of the site defines the amount of solar radiation and impacts the measuring of strings of the photovoltaic system.

### **Wind energy**

Wind power plants are quickly getting to the lead position in the group of renewable energy sources. In Bulgaria there are several geographical areas that are suitable for the construction of mainly medium-sized wind turbines. Research and design of such equipment is to be done very carefully and thoroughly due to the specifics of the wind energy.

Wind turbines turn the kinetic energy of the wind into electric power. It happens through transformation of the linear movement of wind into torque of the vane shaft which in turn passes this torque onto a reductor and a generator.

The energy obtained in this way is attractive for several reasons: there is plenty of wind, it is free and practically inexhaustible, does not lead to pollution and climatic anomalies.

Researches done with the aim of determining the power potential of wind energy show that there are objective possibilities for its development.

Typically, this kind of wind power plants are constructed in the so called "wind parks" which are situated in previously assessed sites with a high amount of wind.

Again, the following might be pointed out as disadvantages: unbalanced loading; non-possibility of reliable long-run forecasting of winds and the production of energy respectively; difficult connection to the network due to the common remoteness of parks from the network; low frequency vibrations and noises; danger for bats and birds flying and nesting in the area.

### **Geothermal Energy**

Geothermal energy is a thermal energy which is generated and stored in the Earth's crust. This energy originates from the initial forming of our planet (20%) and from the radioactive decomposition of the minerals contained in it (80%). The geothermal gradient, which represents the difference in the temperatures of the core and the surface of the planet, maintains a constant transportation of thermal energy from the inner part to the surface of the planet.

As a completely clean and practically free source of energy it is the best option of providing heating and hot water to a number of settlements, touristic centers and enterprises.

Geothermal energy is profitable, reliable, sustainable and ecological.

The high initial investment, as well as the peculiar disposition of the source which usually is situated on the boundary between tectonic plates, are the main disadvantages.

#### **1.2.2. Theoretical and technical potential of RES**

The index "Potential of Renewable Energy Resources" is viewed in two aspects:

- **Theoretical potential** is the resource which is established on an on-going basis from data from various scientific researches and measurements. In terms of biomass for instance it is the entire quantity of standing lumber, while for water sources it is the entire water resource available. Theoretical potential is the base for the assessment of the technical potential.
- **Technical potential** is defined as a part of the theoretical potential whose use is limited by technical and non-technical conditions obstructing the use of the complete quantity of the renewable energy source. An example of non-technical condition limiting the utilization of the biomass resource is the protected territories where economic activities are banned.

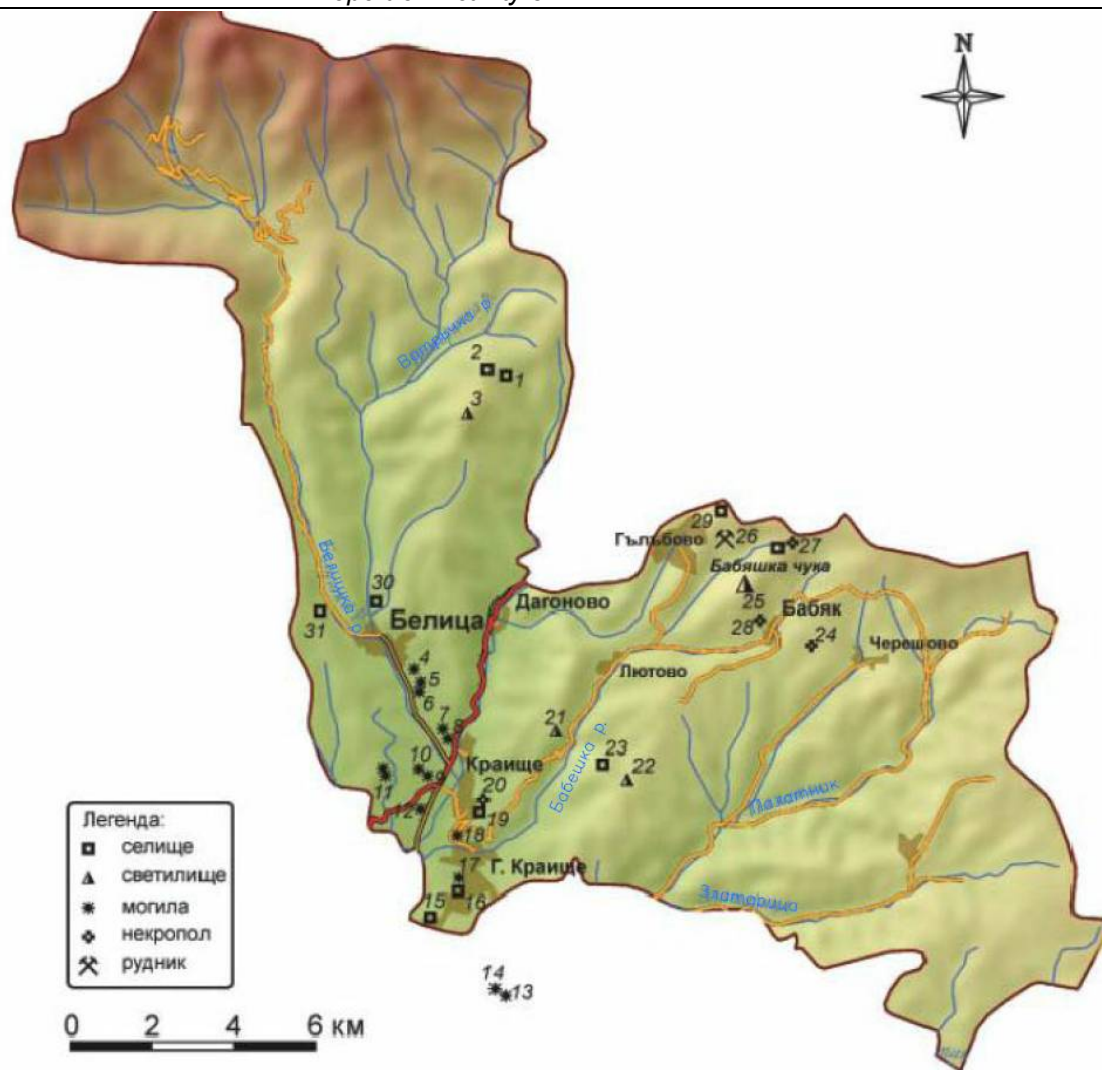
### 3 . BELITSA MUNICIPALITY

#### 2.1 SUMMARY

Belitsa Municipality is one of the smallest municipalities in Southwestern Bulgaria with an area of 382 km<sup>2</sup> and a population of 9 927 inhabitants and is one of the municipalities of Blagoevgrad region. The town of Belitsa is the main administrative center of the municipality with 3 362 inhabitants, situated on the southern slopes of the Rila Mountain. The municipality borders the municipalities of Bansko , Razlog, Yakorouda, as well as Velingrad municipality in the District of Pazardjik; Rila Municipality in Kyustendil district and Samokov Municipality in Sofia district. It covers twelve settlements: the town of Belitsa and eleven villages: Kraishte, Gorno Kraishte, Dagonovo, Babyak, Gulubovo, Palatik, Chereshovo, Kuzyovo, Ortsevo, Lyutovo and Zlatarica.



Boundaries of Belitsa municipality



Map of Belitsa Municipality

The settlement network is poorly developed due to the limitations of the terrain, with no significant administrative and economic center. Eight of the mayoralties (Babjak, Gulubovo, Palatik, Cheresovo, Kuzyovo, Ortsevo, Lyutovo and Zlatarica) are scattered in the higher part of the Rhodope mountains.

Total area of the municipality is 293 536 decars.

### 3.1.1 Natural Resources

- **Relief**

The relief is mostly mountainous and hilly. Its average decline is 9.1%. The area covers parts of Rila and Rhodope mountains and the valley of the river Mesta. East of the Belichka river valley stretch certain parts of the eastern section of Rila Mountain. There are wide meadows in Semkovo (1600 - 1750m above sea level) on the southern slope of Rila Mountain and mountain slopes steeply dropping to Razlog valley. The municipal center – town of Belitsa is 880 m above sea level in the southern part of Rila Mountain and is connected by a 4 km deviation of the main road Razlog - Velingrad.

- **Climate**

The climate in the municipality is transitional-continental with Mediterranean influence, while in the higher parts of the mountains it is mountainous. The Mestenska Valley has a transitional-Mediterranean climate, but less pronounced than that in the Struma River valley due to its higher altitude. In the valley of Mesta River northwest winds prevail. The Rila massif rises on the border between the moderate-continental and transitional-Mediterranean climate. The mountainous terrain, large vertical segmentation and radial orientation of mountain ridges determine the layered weather with pronounced local variations. The maximum precipitation is in June, minimum - in February. Winters are cold with an average temperature in January of -2° C. Snow cover lasts about 150 days a year, and with the increase in altitude the number of days with snow cover also increases. Summers are short and cool with an average temperature in July of 18° C.

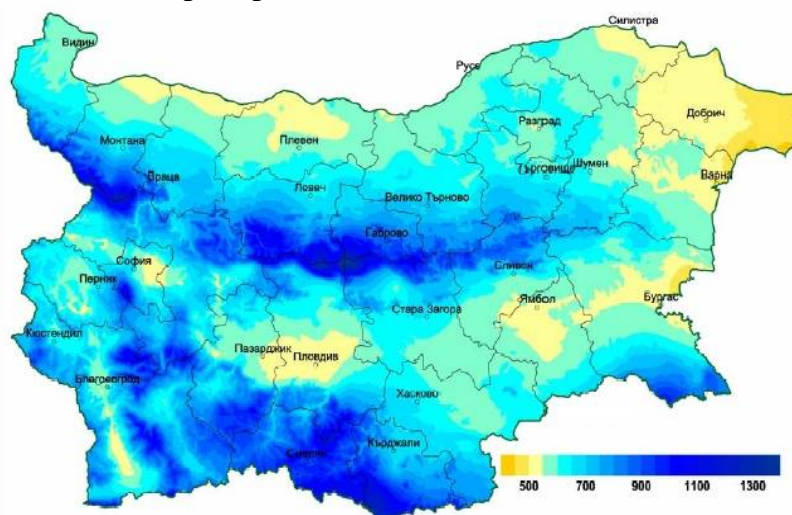
**Average monthly air temperature (°C)**

Belitsa Meteorological Station	January	February	March	April	May	June	July	August	September	October	November	December	Average Annual
		-1,7	0,3	3,9	9,0	13,6	16,7	18,6	18,9	15,1	10,4	6,2	0,8

**Relative air humidity (%)**

Belitsa Meteorological Station	January	February	March	April	May	June	July	August	September	October	November	December	Average Annual
		84	82	74	67	68	68	65	63	65	71	88	85

**Annual amount of precipitation**



Spatial distribution of annual precipitation in Bulgaria (in mm)

In the table below monthly and annual amount of precipitation is shown (55-year period average) for the two neighboring rain measuring stations in Razlog and Yakoruda

**Monthly and annual amount of precipitation (in mm)**

Rain measuring station	January	February	March	April	May	June	July	August	September	October	November	December	Average Annual
Razlog	66	56	53	61	59	57	48	29	34	60	71	72	<b>66</b>
Yakoruda	54	48	45	48	75	70	57	43	39	53	66	62	<b>66</b>

• **Soils**

Highland zones of Rila and Rhodope mountains are occupied by brown forest and mountain-forest dark soils. Lower parts of the valley of Mesta river are occupied by alluvial and alluvial-meadow soils.

Soil and climatic conditions and the strong vertical segmentation of the landscape have led to the development of strong and very strong degrees of erosion, especially in deforested areas. A major problem in the region is the massive logging, leading to increased erosion. Major part of the agricultural land located in the mountainous area is steeper than 6 degrees; it is not cultivated and grass grows on it naturally, which partly limits the erosion in a natural way.

–**Brown forest soils** - (Photo 1) sandy-clay. These are the most widespread soils in mountainous areas above 600 m altitude. They are humus-rich with a content of up to 12%, but the humus substance is not of a very good quality - the process of humification has not been completed. The reaction is slightly acidic - pH 5,5 ÷ 6. They are medium-stocked with easily absorbed nitrogen and phosphorus. Forest vegetation usually grows on them and they are rarely used for agriculture (mostly potatoes). In the higher parts of the mountains brown forest soils turn into dark colored forest and mountain-meadow soils. On the surface, there is usually 5 cm litter of dead organic debris, then 10 to 60 cm humus-accumulative horizon. They are fragmented and contain sharp stones across the profile.

- **Alluvial and alluvial-meadow soils** - (Photo 2a and photo 2b) distributed on I and II terraces above the rivers in the country. They are rich in stone materials and humus substances, are highly water-permeable and suitable for growing vegetables. Beside fertilization, the main activities to increase their fertility are aimed at preventing them from flooding by rivers, as well as from swamping and salinization.



Photo 1



Photo 2a



Photo 2b

• **Water resources**

The water resources of the municipality are formed by the Rila mountain rivers Mesta (coming out of the territory of the neighboring municipality Yakorouda), Belishka, Votrachka and the rivers coming from the West Rhodope mountains: Babeshka, Zlatarica, Palatik and their tributaries. Abundant precipitation, prolonged snow cover and relatively well-developed forest and grass vegetation determine the affluence of Rila mountain rivers in the municipality.

In the region of Belitsa municipality there are two springs, and on the territory of the municipalities in Rila National Park there are four mountain lakes.

### **Water Supply Systems**

- **Potable water supply of the town of Belitsa and the tourist sites**

The water intake for potable water supply of Belitsa is on Vapata River with a maximum authorized amount of water - 0,35 l/s. The water supply system is made of asbestos-cement pipes which are not suitable for the construction of hydropower plants.

- **Potable water supply of Belitsa Park for readaptation of dancing bears**

The water intake for potable water supply of Belitsa Park for readaptation of dancing bears is Polenishka River with a maximum authorized amount of water - 0,2 l / s.

- **Flora**

Physical and geographical conditions specific to the area determine the availability of diverse natural forest vegetation. The coniferous species dominate the Rila Mountain: white and black pine, spruce, white and black fir. In the lower parts of the mountain oak is the most widespread of the deciduous species, with deciduous vegetation entering Rila river valleys deep in the mountain. Trees over 60 years of age dominate, as well as medium-aged up to 60 years.

- **Fauna**

The territory of Belitsa municipality includes Rila National Park which is a second-category protected natural site according to the classification of the International Union for Conservation of Nature. Situated on a territory covering 4 districts and 11 municipalities, the Belitsa section is of great importance for the conservation of biodiversity of large mammals. Species such as chamois, deer, wild boar and wolf can be found there. The chamois appears not only in the Red Book of Bulgaria as endangered species; it is also listed in the global ranking of the world semi-endangered species. The Dry Lake, which is one of the few habitats of glacial relict alpine newt, is also situated in this area. Other glacial relicts in the area are viviparous lizard and viper.

- **Protected sites**

The region has a large number of protected natural areas. The northern part of the municipality is located within the National Park of Rila, a 2<sup>nd</sup> category protected natural site under the classification of the International Union for Conservation of Nature.

- **Cultural and historical heritage**

6 km from Belitsa there is a Neolithic settlement dated to the early Neolithic Age with painted ceramics.

Near the town of Belitsa, 2 km from the Park for readaptation of dancing bears in the "Temnitsko" area is situated a Thracian settlement representing a Necropolis from IV century B.C.

3 km from Belitsa is the ancient site “Belichka Chuka”, representing a tomb from IV – V century BC.

7 km north of Belitsa in the area “Krastava mogila” a Thracian rock settlement is situated which has the status of immobile archaeological cultural heritage.

## 3.2 ENERGY FROM WATER SOURCES

### 3.2.1 Description of the subject of the research

Subject of this research is drawing up of a list of areas suitable for production of energy from RES. Based on the checks done of the suitable areas in Belitsa municipality and based on the information gathered in the process, several areas have been identified as suitable for production of energy from RES.

### 3.2.2 Assessment of the area

#### *a) Field research of the area;*

The information about the conditions of the area was taken from the topographic maps, as well as from the field trips for informing about the area conditions, geology, access roads, opportunities for connecting to the electrical network, etc. Satellite data about the environment are also a proven valuable source of information.

Different mapping materials have been used for the purpose of preliminary assessment of the potential for production of electricity from water sources in Belitsa Municipality, namely:

- Topographic maps of Belitsa, in scale 1:50 000
- Topographic maps of Belitsa, in scale 1:25 AM 000
- Satellite images from Google Earth
- Interactive map of NATURA 2000.

On-the-spot visits have been made to all potentially usable areas for production of electricity from water sources in Belitsa Municipality.

#### *b) Location and exact coordinates;*

In Annex 1 (Map 1) is given a map of Belitsa Municipality.

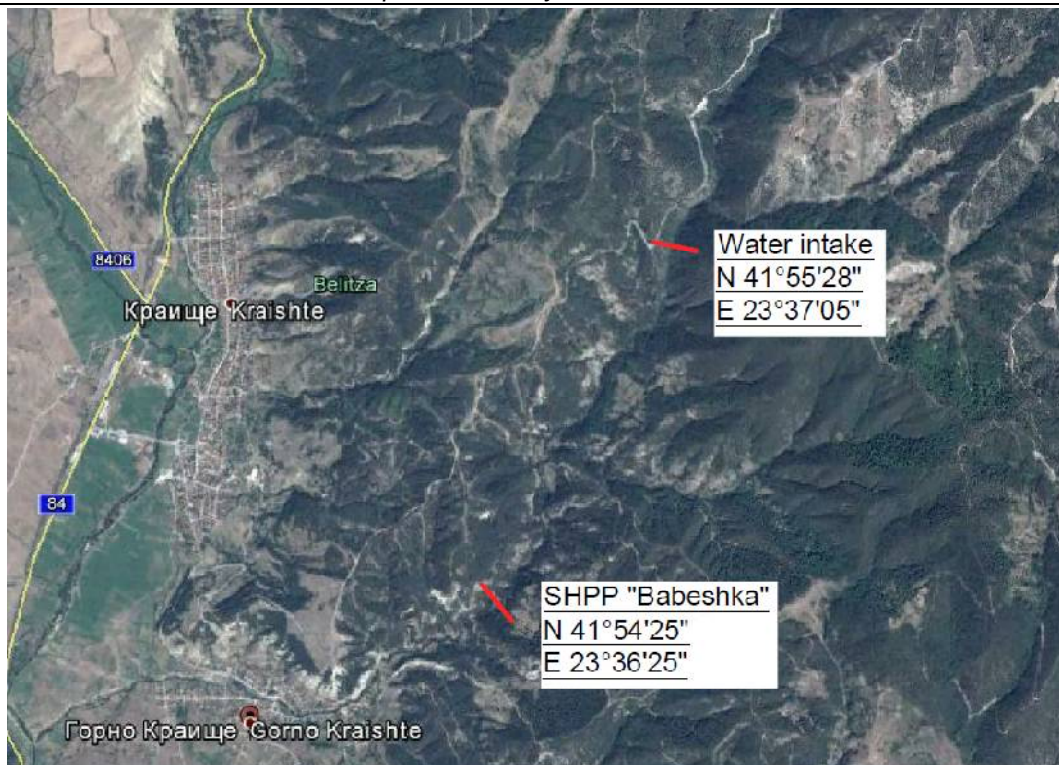
In Annex 2 (Drawings 1 and 2) the position of the selected zone of production is indicated.

#### ❖ Geographic coordinates

The exact geographic coordinates of the area are shown below, as well as satellite images from Google Earth.

Water intake: N 41°55'28"; E 23°37'05"

HPP: N 41°54'25"; E 23°36'25"



### 3.2.3 Evaluation of the resource

The water resources of the municipality are formed by the Rila mountain rivers Mesta (coming out of the territory of the neighboring municipality Yakorouda), Belishka, Votrachka and the rivers coming from the West Rhodope mountains: Babeshka, Zlatarica, Palatik and their tributaries. Abundant precipitation, prolonged snow cover and relatively well-developed forest and grass vegetation determine the affluence of Rila mountain rivers in the municipality .

The main rivers capable of production of electric power, passing through the territory of Belitsa Municipality, are: Belishka, Votrachka, Stankova and Babeshka rivers.

#### a) Used methodology and models;

The present research is using data from:

- The climatic indexes of Bulgaria about temperature and relative air humidity, monthly and annual amounts of precipitation and maximum precipitation which play an important role in the forming of river flux.
- Data was used from the Hydrological Index of the Rivers of the Republic of Bulgaria (issued by the Institute of Hydrology and Meteorology at the Bulgarian Academy of Science, 1982-1990) about the available hydrometric and hydrometeorology stations along the river valleys in Belitsa Municipality.
- Data from other hydrology research and studies in neighbouring river valleys

Hydrographic, hypsographic and other characteristics of the water sources have been established on the basis of maps in scale M 1:25 000.

The main hydrological parameters of the flux have been calculated on the basis of multiannual measurements of the water quantities in different hydrometric stations situated along the valleys of the rivers in the municipality.

There are 22 hydrometric stations installed and functioning in the catchment basin of Mesta river. 5 of them are along the main river, and the rest are on the tributaries. They are part of

the National Hydrometric Network. The density and placement of the stations are sufficient for the purposes of design and evaluation of the water sources.

There is only one station in the catchment basin, station № 52800 (215) at Momina kula, which gives information about monitoring of water levels since 1927, and water quantities since 1935/36. The rest have been installed in the 50s. The first limnographs (1958) have been installed in the stations at Momina kula and Hadzhidimovo, and later in the end of the 60's and early 70's a total of 13 limnographs have been installed. They are daily, with graphic analogous (continuous) recording of water levels on paper. Sheets are changed daily at 8 o'clock in the morning, when the water levels on the water meter rack are measured. The limnographs (measurement device, tools and stands for filtering turbidity samples) are placed in limnograph booths above appeasement shafts, where cleaning of sludge on the bottom is foreseen.

In the stations without a limnograph the water levels are measured twice: 8:00 in the morning and 20:00 in the evening by a hydrology observer. Measurement of water quantities is carried out by hydrometric propellers. In compliance with the national legislative documents and those of WMO (World Meteorological Organization). For the proper plotting of key curves and reliable definition of water quantities, measurements were made (up to 1989) once or twice a month, covering the entire fluctuation range of the flux, and in case of a high wave extra measurements were made to capture it.

## Water Supply Systems

- Potable water supply of the town of Belitsa and the tourist sites

The water intake for potable water supply of Belitsa is on Vapata River with a maximum authorized amount of water - 0,35 l/ s. The water supply system is made of asbestos-cement pipes, which are not suitable for building HPP.

- Potable water supply of Belitsa Park for readaptation of dancing bears

The water intake for potable water supply of Belitsa Park for readaptation of dancing bears is Polenishka River with a maximum authorized amount of water - 0,2 l/ s.

*b) main parameters – general information on the sources;*

- Main climatic characteristics of the assessed area

### AVERAGE MONTHLY AIR TEMPERATURE (°C)

Met. station	I	II	III	IV	V	VI	VII	VIII	IX	X	XI	XII	Annual
Belitsa	-1.7	0.3	3.9	9.0	13.6	16.7	18.6	18.9	15.1	10.4	6.2	0.8	9.3

### RELATIVE AIR HUMIDITY (%)

Met. station	I	II	III	IV	V	VI	VII	VIII	IX	X	XI	XII	Annual
Belitsa	84	82	74	67	68	68	65	63	65	71	88	85	73

### MONTHLY AND ANNUAL AMOUNT OF PRECIPITATION (in mm)

Rain meter station	I	II	III	IV	V	VI	VII	VIII	IX	X	XI	XII	Annual
Razlog	66	56	53	61	59	57	48	29	34	60	71	72	66
Yakoruda	54	48	45	48	75	70	57	43	39	53	66	62	66

### Description of hydrological regime of rivers

Basic hydrological parameters have been determined based on observations in the period 1961 ÷ 1998.

#### ➤ *Belishka River*

- Orohydrographical characteristics

Belishka river draws its waters from Vapski Lakes, Skalishki Lakes, the south-east slopes of Kanarata Peak (2691 m), Pastri Slap Peak (2683 m) and Goliama Pastrica peak (2606 m). In the upper stream the watershed of the river is largely covered with predominantly coniferous trees but there are also deciduous trees.

Up to Hydrometeorological Station (HMS) 460 – Belishka River, 5 km above Belitsa town the watershed covers an area of 64.7 km<sup>2</sup>.

- Basic hydrological characteristics

**Table 1. Basic hydrological parameters of Belishka river**

F (km <sup>2</sup> )	M <sub>0</sub> (l/s.km <sup>2</sup> )	Water quantity and volume	Provision %						
			Average	95	90	75	5	1	0.1
64.7	19.32	Q <sub>0</sub> (m <sup>3</sup> /s)	1.25	0.69	0.79	1.05	91	138	211
		W <sub>0</sub> (mln. m <sup>3</sup> )	38.38	21.63	24.98	33.10	-	-	-

➤ *Votrachka River with right tributary Stankova River*

In the watershed of Stankova river there is no hydrometeorological station (HMS) set up. For the determination of water draining characteristics data have been used from the analogue station HMS №210 on Votrachka river above Belitsa town, and additionally from the HMS №211 on Biala river. The source feeding of the watersheds of Belishka and Votrachka rivers comes from deep fissures and the influence of heavy rain alluviums in the foot of high peaks is significant over the average multiannual water flux.

Due to the specific high mountain conditions, topographical, orohydrographical, soil-geological and climatic peculiarities of the watersheds, the superficial water flux is influenced by the climatic peculiarities and the precipitation.

**Table 2. Basic hydrological parameters of Stankova river**

F (km <sup>2</sup> )	M <sub>0</sub> (l/s.km <sup>2</sup> )	Water quantity and volume	Provision %						
			Average	95	90	75	5	1	0.1
10.10	36.5	Q <sub>0</sub> (m <sup>3</sup> /s)	0.369	-	-	-	-	57.80	-
		W <sub>0</sub> (mln. m <sup>3</sup> )	11.64	-	-	-	-	-	-

**Table 3. Basic hydrological parameters of Votrachka river**

F (km <sup>2</sup> )	M <sub>0</sub> (l/s.km <sup>2</sup> )	Water quantity and volume	Provision %						
			Average	95	90	75	5	1	0.1
33.48	21.59	Q <sub>0</sub> (m <sup>3</sup> /s)	0.716	0.309	0.456	0.607	-	-	-
		W <sub>0</sub> (mln. m <sup>3</sup> )	22.80	11.32	14.38	19.42	-	-	-

➤ *Babeshka River*

**Table 4. Basic hydrological parameters of Babeshka river - estuary**

F (km <sup>2</sup> )	M <sub>0</sub> (l/s.km <sup>2</sup> )	Water quantity and volume	Provision %						
			Average	95	90	75	5	1	0.1
31.20	12.14	Q <sub>0</sub> (m <sup>3</sup> /s)	0.378	0.256	0.286	0.324	-	-	-
		W <sub>0</sub> (mln. m <sup>3</sup> )	11.92	8.073	9.019	10.22	-	-	-

### 3.2.4 Evaluation of the potential

a) *Used methodology and models;*

The potential for construction of a small HPP is defined by the water quantity at the water intake and the location of the power plant on the river course. The height difference between the two spots is defined as Hydraulic (gross) pressure (H<sub>gr</sub>).

The evaluation of the potential of a small HPP depends on the following factors:

- The serious variations in the natural debit of the water according to season, as well as the dry and wet periods of hydrological years. These specific characteristics are of particular importance concerning small fluxes.
- Types of hydro turbines. The types of hydro turbines are selected according to a specific range of the nominal hydraulic (net) pressure and nominal debit. Each has a different range of operation, different effectiveness, whose maximum depends on the nominal power of the turbine, the different sizes and price.

The production of electrical power from water sources in Belitsa Municipality is reduced to the utilization of the energy potential of Babeshka river. The remaining water sources are with depleted potential, since there are hydro power plant constructed on them. The parts of the rivers free from construction have practically zero potential for production of electrical power. In Annex 3 there is a table containing the HPPs constructed in Belitsa municipality.

Based on the available technical information and the examinations done on the spot, an area for construction of HPP on Babeshka river above Gorno Kraishte village in Belitsa municipality has been selected. For the selected area for production of electrical power the theoretical and technological potential have been defined.

*b) Theoretical potential;*

The theoretical energy potential of a certain section of a hydraulic stream is the quantity of potential energy of the water stream for one year, defined by the complete fall and the average multiannual flux of the reviewed section.

The use of hydraulic power is a combination of activities for transformation of the latter into electrical power, which takes place by means of hydro power plants.

The working principle in production of power from water is to turn the potential energy of the water stream in the reviewed section into electrical power by creating artificially or naturally a concentrated height difference between two water levels - called a fall (pressure) and concentration of the water quantity.

Essentially, the fast-flowing water is not sufficient for conclusive production, except in large power plants in the seas and oceans where streams are used. Therefore, two parameters are accounted for: water quantity (Q) and total pressure (H).

The total pressure (H) is the maximum possible height of waterfall from the upper stream level down to the lower stream level. The real height, however, would be a little less than the total, due to losses.

The water quantity (Q) in the river is the volume of water transferred through a certain section per second, measured in m<sup>3</sup>/s.

The theoretical energy potential of the selected stream is defined by the formula:

$$P = \rho \cdot g \cdot Q \cdot H$$

where:

- $P$  - average power of the water stream (W);
- $\rho$  - water density (1000 kg/m<sup>3</sup>);
- $g$  - Earth's acceleration (9.81 m/s<sup>2</sup>);
- $Q$  - the average water quantity which flows through the reviewed section for a certain period of time (m<sup>3</sup>/s);
- $H$  - total pressure.

For the reviewed section the theoretical potential for construction of a HPP is:

$$P = 1000 \cdot 9,81 \cdot Q_3 \cdot H_{gr} \text{ m} = 1000 \cdot 9,81 \cdot 0,50 \cdot 110 \approx 540 \text{ 000 W} = 540 \text{ kW}, \text{ where:}$$

- $Q_3$  – Constructed water quantity - *the water quantity with which the power plant will be working. Upon designing of derivation-type hydro power plants an increase of the average water quantity by about 50% is assumed.*
- $H_{gr}$  - the gross pressure of the power plant (not accounting for losses)

*c) technological potential;*

The technological energy potential of a certain section of a hydraulic stream is the quantity of potential energy of the water stream for one year, defined by the net fall (accounting for pressure losses along the route from water intake to the power plant) and the average multiannual flux of the reviewed section.

The technological energy potential of the selected stream is defined by the formula:

$$P = c \cdot Q \cdot H_n$$

where:

- $P$  - average power of the water stream (kW);
- $c = \eta \cdot g - c \approx 8 \div 8,2$  for HPP with power less than 5000 kW
- $\eta$  - overall quotient accounting for efficiency of energy equipment;
- $\rho$  - water density (1000 kg/m<sup>3</sup>);
- $g$  - Earth's acceleration (9.81 m/s<sup>2</sup>);
- $Q$  - the average water quantity which flows through the reviewed section for a certain period of time (m<sup>3</sup>/s);
- $H_n$  - net pressure ( $H_n = H_n - h_{loss}$ );
- $h_{loss}$  - pressure losses from water intake to HPP.

For the reviewed section the theoretical potential for construction of a HPP is:

$$P = 8 \cdot Q_3 \cdot H_n \text{ m} = 8 \cdot 0,50 \cdot 110 = 440 \text{ kW}$$

### 3.2.5 Technologies for utilization of the evaluated resource potential

*a) applicable technologies for the specific sources and areas;*

The main element in a small HPP is the hydro turbine. The turbines transform energy from water pressure into torque, but under different circumstances different types of turbines are used. The selection is made according to the characteristics of the spot, the height and volume of the water quantity, the desired rotation speed of the generator and whether the turbine is expected to also work at slower water speeds.

There are two main types of turbines in existence - active and reactive. The active type transforms the potential energy of the water into kinetic energy by a stream of water coming from a nozzle and actuation the turbine's propellers. The reactive type, in turn, uses the pressure of the water, as well as its speed, to create power. The working wheel is entirely submerged and thus both pressure and speed are reduced when exiting the turbine. In the opposite case with the active turbine the propellers are actuated by a stream and are in the air.

The most common may be grouped into three categories:

- Kaplan and propeller turbines;
- Francis turbines;
- Pelton and other active turbines.

Kaplan and propeller turbines are axial reactive turbines, usually used for small pressures (usually under 16 m).

Francis turbines are reactive turbines with radial stream, with fixed blades and adjustable angle, which are used for average heights of water pressure.

Pelton turbines are impulse turbines with one or more streams. Each stream passes through a nozzle with a needle valve for stream control. Used for average and high waterfalls.

**Table 5 Range of use of the types of hydro turbines**

Type of turbine	Pressure H [m]
Archimedes' screw turbine	1.0 < H < 10
VLH	1.5 < H < 4.5

Kaplan	$20 < H < 40$
Francis	$10 < H < 350$
Pelton	$50 < H < 1300$
Turgo	$50 < H < 250$

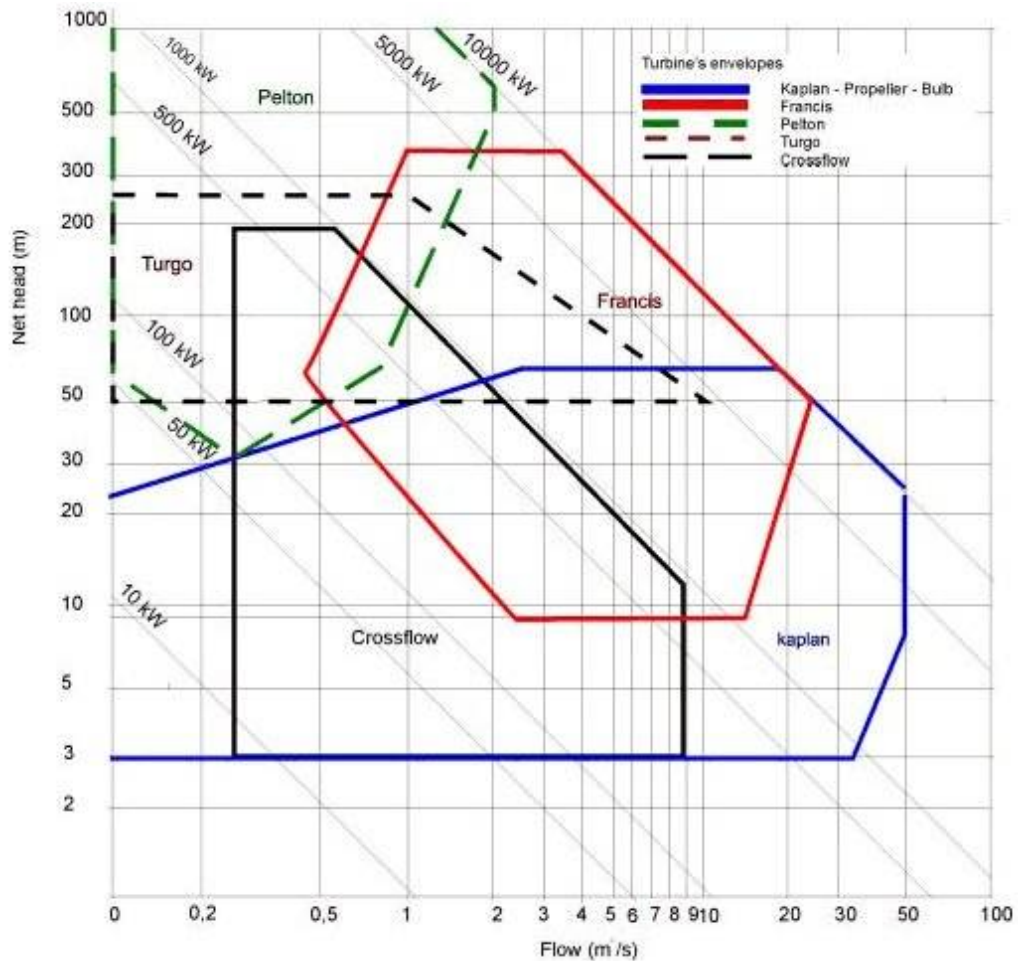
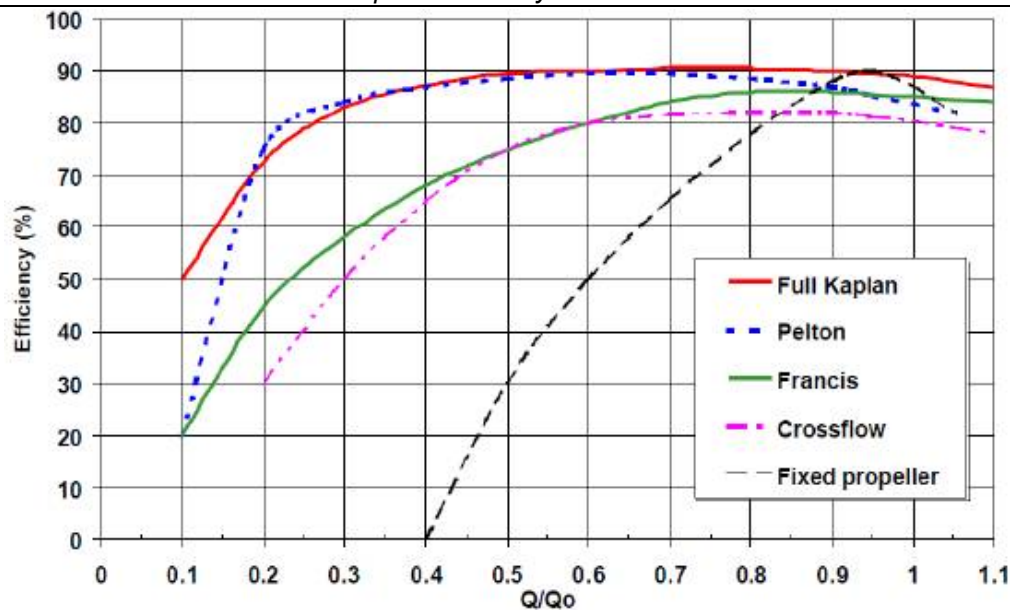


Figure 1. Operation range of hydro turbines



**Figure 2. Effectiveness of hydro turbines**

For the reviewed section for production of electrical power from RES in Belitsa municipality, and with a view of the main parameters, with which the power plant ( $Q=0.5 \text{ m}^3/\text{s}$  and  $H=110 \text{ m}$ ), the use of a Pelton-type turbine is assumed.

*b) economical viability of the applicable technologies;*

HPPs have small operational and maintenance costs. Their lifecycle is very long and they are extremely reliable from an operational point of view, therefore, this is a secure and well-tested technology. Furthermore, small and mini HPPs have a higher return on investment due to their small investment capital and operational costs for maintenance. They are easier to construct and commission, due to the simplified design, thus keeping the costs low.

The selected turbine will provide high power production and maximum reliability during operation. It has high efficiency even when working with 20% of the constructed water quantity. The technology is very well-known and has proven its qualities worldwide.

The return on investment period for such a project may be defined after a detailed feasibility study containing the necessary data. In most cases this period is within the guaranteed period for buying out the electrical power (7÷9 years).

*c) recommendation of technology;*

Based on the inspections done of Babeshka river the place of water catchment and HPP building have been chosen to be in the area above Gorno Kraishte village. This area has been proposed for possible construction of a small HPP and basic parameters of the future plant have been established. By the moment of elaboration of this report there were no other investment intentions and it is free for future development.

Babeshka River HPP is planned to be of a derivation type with a water catchment, pressure pipeline and a building for the HPP.

The water catchment will be a bottom grid of Tyrolean type. The catchment will be placed on a part of the river close to the road. The bottom level of the river is at an altitude of circa 940 m.

The water level above the catchment basin is at around 948 m. The catchment basin will include bottom grids placed across the river, tidal outlets for alluvia, fish passage and sludge basin with water intake chambers for a pressure pipeline.

The pressure pipeline will be about 2,4 km long. It will be dug in 1 m underground. Its route will run along the less inclined bank of the river. The pipe diameter will be 0,6 m. Pipes will be made of fiberglass. The platform of the HPP building will be situated in the end of the narrow

valley immediately in its extension. The HPP site is 1,5 km above the village of Gorno Kraishte. Next to it there is a country road along the riverbank.

### **3.2.6 Forecast annual production of energy on the basis of the recommended technology**

Parameters of the small HPP and potential annual average energy production:

- Water amount: 0.500 m<sup>3</sup>/s
- Pressure: 110 m
- Turbine type: Pelton
- Power: 440 kW
- Average annual energy production: 2 024 MWh

### **3.2.7 Risk assessment**

#### *a) risk assessment;*

Risk assessment was made for 6 main risk factors, which have the greatest impact on the overall risk assessment:

- Resources - related to the availability of the power carrier - hydro resources. High waters. low waters - aridity, drought, drawing away waters at a higher elevation;
- Technical - including: development and implementation of the investment designs;
- Investment - including: price, costs, financing;
- Operation - achieving the foreseen results (ex. planned prime cost of electrical power from RES, a risk related to the functioning of the site);
- Environment and perception - impact on the environment. Aesthetical perception.
- Political - related to changes in the national policy concerning RES

#### *b) recommendations for management of risks;*

Recommendations for management of the separate types of risks are given in Table 6. Due to the fact that each separate investment project is unique on its own, a specific risk assessment must be made and specific measures for minimizing them must be laid out.

**Table 6 Types of risks related to HPP and their management**

<b>№</b>	<b>Type of risk</b>	<b>Management</b>
1	<b><u>Resources</u></b>	
	Unfavorable climatic conditions - minimum and maximum water quantities	Unmanageable
2	<b><u>Technical</u></b>	
	Development and implementation of the investment designs;	References for design teams
	Quality of equipment	References for suppliers; Negotiating long warranty periods for functionality of installations and achieved project parameters
	Quality of installation	References of installation company
3	<b><u>Investment</u></b>	
	Price of technology; Cost price of produced energy	Feasibility analyses. Assessment of static and dynamic financial and economic indicators. Evaluation of market potential
	Opportunity for ensuring acceptable grant scheme for implementation of the project	Development of a quality investment design and project proposal for application under the relevant grant scheme
	Opportunities for ensuring own co-financing and eventual bank loan	Well-developed business plan. Awarded project for grant financing under an European Programme, guaranteeing better loan conditions. Well-developed schedule, related to delivery periods and periods for receiving funds.
4	<b><u>Operational</u></b>	
	Maintenance frequency	Automated monitoring and management system
	Guaranteed result from operation	Staff training
	Opportunity for delivery of spare parts	Contracts for warranty and post-warranty maintenance
	Encroachment upon the facilities	Security, Insurance
5	<b><u>Environment and perception</u></b>	
	Impact on the environment; Perception by the public; Influence on the local economy	EIA and preventive measures during construction and operation
6	<b><u>Political</u></b>	
	Change of legislation; Change in the mechanism for purchasing of electrical energy; Introduction of new rules and ordinances	Unmanageable risk; Close monitoring of the dynamics of the process and, if possible, signing long-term contracts for purchasing of electrical energy

### 3.2.8 Evaluation of information reliability

For the purposes of definition of the potential for production of electricity, no additional on-the-spot measurements have been made for the selected production area. The available information about the water quantities and mapping materials are entirely sufficient for defining the

parameters of the future power plant with the necessary accuracy for this type of research and no additional measurements need to be done.

The used data sources, mapping materials, etc, provide enough guarantees of the correctness and authenticity of the input data and project results.

### **3.3 ENERGY FROM BIOMASS**

#### **3.3.1 Assessment of the area**

Fields occupy most of the arable land in the Municipality Belitsa: 19 131 decars or 55.9% of the municipal territory. The amount of permanent crops is 3 241 decars (9.5% of arable land). The amount of natural meadows is considerable: 11 787 decars (34.5%).

The total area of cultivated land (arable land, with fields and pastures) is 62 146 decars, or 21.1% of the municipal territory.

The main crops for the municipality are potatoes. Other crops grown are: beans, corn for grain and tobacco.

Livestock production is carried out only in the private sector and is characterized by the large number of small farms raising animals. Around 1690 heads of cattle, 6400 sheep, 445 goats and 314 horses are bred in the municipality.

In the municipality there are wood processing factories for production of lumber. Sawdust, splinters and barks are waste by-products from this production. Quantities of these residues are not known, but it is possible for their processing to be organized into pellets or briquettes for distribution to residents; thus, the quantity of timber used as firewood and illegal logging will be reduced.

On the territory of the town of Belitsa there is a working installation for production of pellets. This installation is owned by one of the factories and its capacity is unknown. It is probably used for recycling of waste from its own production.

Organized waste collection is done twice a week for Belitsa and once for the villages served in an organized manner. Amount of waste generated in the municipality is about 5152 tons from households and 11,700 tons from construction works.

The most probable biogas installation is the one located in Belitsa, provided that it will be using manure only from Belitsa and the closest villages: Kraishte, Gorno Kraishte and Dagonovo. They are at an average distance of 3 km from the road junction to Belitsa and are at the same altitude. In the other villages biogas could be produced in each settlement separately in small quantities from 1.5 to 3,5 m<sup>3</sup> per hour. These installations may have an effect only in environmental aspect.

#### **3.3.2 Evaluation of the resource**

Evaluation of the resource was made on the basis of the existing opportunities and the availability of biomass in the municipality. Thus the three main raw materials for energy production have been defined - rapeseed for biodiesel, straw for heating, manure for biogas.

#### **3.3.3 Evaluation of the potential**

##### **Rapeseed for production of biodiesel**

If 25% of the arable land of the municipality Belitsa i.e. 5000 decars (500 ha) are allocated for the production of rapeseed, this would make 210 500 kg of biodiesel or 2,525,250 kWh a year.

Theoretical potential is 10 101 MWh per year, while technical potential is 2 525,25 MWh per year.

##### **Straw for direct combustion for heating**

The technological potential of the straw used for animal bedding is about 23 MWh / year, and the theoretical potential is about 60 MWh / year.

### **Manure for biogas production and utilization by cogeneration**

From the livestock listed in item 2.3.1. it is possible to collect the manure to produce biogas in the amount of 190 m<sup>3</sup> / h or about 1200 kW. Energy value of biogas produced from manure is estimated at around 480 000 m<sup>3</sup> of biogas per year, or 3 024 000 kWh energy per year. This would ensure the operation of a boiler or a cogenerator with a power of 370 kW at annual load of around 8000 hours.

Theoretical potential is 10 485 MWh/year, while technical potential is 3 024 MWh/year.

The lower part of the range of calorific value of biogas depends on the content of methane (50% ÷ 70%) and is in the range of 6 ÷ 8 kWh/m<sup>3</sup>.

If residues of crops are measured after the harvest an additional quantity of the produced biogas can be determined, whereas the extraction of biogas from tonne of organic dry matter is:

- Fresh alfalfa 350 m<sup>3</sup>
- Grass 550 m<sup>3</sup>
- Straw 340 m<sup>3</sup>
- Tree leaves 250m<sup>3</sup>
- Corn stalks 420 m<sup>3</sup>
- Dairy waste 630 m<sup>3</sup>
- Sewage waters 600 m<sup>3</sup>

### **3.3.4 Technologies for utilization of the evaluated resource potential**

#### **Biogas production**

For the production of biogas in the municipality a bioreactor needs to be built on a previously researched and approved site, near sources of organic waste. A major issue is that regular collection and consistency in the and production of manure from individual farms in Belitsa Municipality needs to be ensured. Disposal should be done regularly and in an organized manner.

- Out of one ton of manure from cattle between 200 ÷ 350 m<sup>3</sup> of biogas are obtained with a methane content of 60%;
- Out of one ton of plants 300 ÷ 630 m<sup>3</sup> of biogas are obtained with a methane content up to 70%;

#### **Biodiesel production**

The amount of natural meadows is 11,787 decares. At this stage there are no known abandoned and uncultivated agricultural areas due to a lack of interest or owners. These lands are suitable for sowing of oilseed cultures such as rapeseed or corn.

After removal of seeds, the waste biomass may be used as silage to animals or for the production of biogas in bioreactors.

### **3.3.5 Forecast annual production of energy**

The forecast annual quantities of energy are equal to the technological potential, on the condition that the requirements and particulars of production are observed:

For biodiesel - 2 525.25 MWh/year;

For straw - 60 MWh/year;

For manure - 3 024 MWh/year;

### 3.3.6 Risk assessment

Recommendations for management of the separate types of risks are given in Table 7. Due to the fact that each separate investment project is unique on its own, a specific risk assessment must be made and specific measures for minimizing them must be laid out.

**Table 7 Types of risks related to biomass and its management**

<b>№</b>	<b>Type of risk</b>	<b>Management</b>
1	<b><u>Resources</u></b>	
	Loss of lumber: <ul style="list-style-type: none"> <li>– fires;</li> <li>– snow-crush damages;</li> <li>– dry tops and branch cutting</li> <li>– rotting;</li> <li>– damages by insects;</li> <li>– grazing;</li> <li>– poaching.</li> </ul>	Fires caused by man can be limited through amendments in the penal legislation in the area, through larger-scale organization of forestry and firefighting services for their containment, fighting poaching, etc.
	Security of deliveries, forecast resources, storage	Supply contracts, building storage facilities
2	<b><u>Technical</u></b>	
	<ul style="list-style-type: none"> <li>– changes existing technologies with new ones (investment);</li> <li>– existing competitive technology (cost-effectiveness);</li> </ul>	
	Development and implementation of the investment designs;	References for design teams
	Quality of equipment	References for suppliers; Negotiating long warranty periods for functionality of installations and achieved project parameters
	Quality of installation	References of installation company
3	<b><u>Investment</u></b>	
	Price of technology; Cost price of produced energy.	Feasibility analyses. Assessment of static and dynamic financial and economic indicators. Evaluation of market potential
	Opportunity for ensuring acceptable grant scheme for implementation of the project	Development of a quality investment design and project proposal for application under the relevant grant scheme
	Opportunities for ensuring own co-financing and eventual bank loan	Well-developed business plan. Awarded project for grant financing under an European Programme, guaranteeing better loan conditions. Well-developed schedule, related to delivery periods and periods for receiving funds.
4	<b><u>Operational</u></b>	
	Maintenance frequency	Automated monitoring and management system
	Guaranteed result from operation	Staff training
	Process maintenance, repairs and supply of spare parts	Contracts for warranty and post-warranty maintenance
	Encroachment upon the facilities	Security, Insurance

<b>№</b>	<b>Type of risk</b>	<b>Management</b>
5	<b><u>Environment and perception</u></b>	
	Impact on the environment; Perception by the public; Influence on the local economy	EIA and preventive measures during construction and operation
6	<b><u>Political</u></b>	
	Change of legislation; Introduction of new rules and ordinances; Environmental restrictions and prohibitions	Unmanageable risk;
7	<b><u>Market</u></b>	
	Migration of users; Changes in preferential prices	Unmanageable risk; Close monitoring of the dynamics of the process and, if possible, signing long-term contracts for purchasing of electrical energy
8	<b><u>Financial and economic risk</u></b>	
		Unmanageable risk;

### 3.3.1 Evaluation of information reliability

For the preparation of this section of the report, no additional measurements have been made at the relevant terrains in the municipality, but publicly accessible data has been used with history from state and municipal services, as well as data collected from the municipality.

In order to receive more accurate and up-to-date information it is necessary to make a research and measurement on-the-spot and to collect data of the specific area. This is the working objective during the development of a detailed works design for the relevant RES.

## 3.4 SOLAR ENERGY

### 3.4.1 Assessment of the area

The suggested sites of construction of photovoltaic panels are relatively flat without declinations and large inclinations. They are selected to be close to asphalt or dirt road, with access for heavy machinery and equipment which will be used for construction.

#### ➤ Area 1

Area 1 is provisionally named Belitsa1, to facilitate its recognition of the photos and in the calculations.

#### ❖ Geographic coordinates

The exact coordinates of the area are shown below, as well as satellite images and photos.

N 41°55'45,82"

E 23 ° 34'42, 55 "

Altitude 808 m.

The site is about 3 km from the center of Belitsa; 1 km from the main road of the municipality II-84 Razlog-Velingrad; 84 km from Sofia; 329 km from the port of Burgas.

The place is dominated by low vegetation, as evidenced by the attached photos.





The location was selected so that it is accessible for installation and operation, near asphalt or passable road, with the ability to facilitate the work of machines. No risk of damming, swamping or fogging.

There is no danger of shading either, as the horizon is clear both to the east and the west.

The soil is firm and able to bear concrete foundations on the surface or in non-freezing depth. In the preliminary survey no signs of shallow underground rocks were found, which makes installation of constructions on pile-driven steel poles or screws possible.

Exact conditions of installation will be clear after a detailed geological survey of the soil.

➤ **Area 2**

Area 2 is provisionally named Kraishte (because of its proximity to Kraishte village) to facilitate its recognition on the photos and in calculations.

❖ **Geographic coordinates**

The exact coordinates of the area are shown below, as well as satellite images and photos.

N 41 ° 54'28 .16 "

E 23 ° 34'50 .90 "

Altitude is 755 ÷ 765 m. Area is ventilated which will ensure better cooling of modules at higher ambient temperatures during summer months.

The site is about 2 km from the center of Kraishte village, 100 km from Sofia; it is next to the main road of the municipality II -84 Razlog - Velingrad; 326 km from the port of Burgas (all distances measured in straight line).

The place is dominated by low vegetation, as evidenced by the attached photos.





The location was selected to be easily accessible for installation and operation, close to asphalt road to facilitate the work of machines. Large leveling or removal of earth are not required. It is located near Mesta River, which could be a prerequisite for the formation of fog, thus reducing its electricity production.

There is no danger of shading, as the horizon is clear both to the east and to the west.

In the preliminary survey no signs of shallow underground rocks were found, which makes installation of constructions on pile-driven steel poles or screws possible.

Exact conditions of installation will be clear after a detailed geological survey of the soil.

### 3.4.2 Evaluation of the resource

For defining the solar energy resource were used the models embedded in the following websites, as well as licensed analysis software:

- [Photovoltaic Geographical Information System \(PVGIS\)](http://www.re.jrc.ec.europa.eu/pvgis/) – [www.re.jrc.ec.europa.eu/pvgis/](http://www.re.jrc.ec.europa.eu/pvgis/) - updated version PVGIS- CMSAF (data on the period from 2006 to 2010 is included)
- METEONORM – Global database on solar radiation;
- [www.meteonorm.com](http://www.meteonorm.com);

- NASA – Database on meteorology and solar energy – [www.eosweb.larc.nasa.gov/cgi-bin/sse/grid.cgi](http://www.eosweb.larc.nasa.gov/cgi-bin/sse/grid.cgi)
- PVSyst V5.20 – Computer program for research/study, measuring, simulations and analysis of data of entire photovoltaic systems.

### 3.4.3 Evaluation of the potential

The electrical energy generated by the photovoltaic installation will be fed to the electrical transfer grid. The country as a whole is rich in solar resources, but it is unevenly distributed on its territory, and the quality of solar radiation is different.

This necessitates the carrying out of a solar energy audit evaluating the solar radiation as a resource for production of electrical energy.

Data below is taken from the website of the Ministry of Economy, Energy and Tourism.

The solar radiation potential on the territory of Bulgaria is significant, but serious differences are observed in the solar intensity by regions. The data analysis shows that in terms of territory, the Republic of Bulgaria may be divided in three solar areas, where the average annual length of sunlight is about 2150 h and represents about 49% of the maximum possible sunlight.

- **Central - Eastern region** - takes about 40% of the country's territory and 30% of the population. The area covers mountainous regions and is characterized by variability of microclimatic conditions.

- Average annual length of sunlight

For the season 31.III- 31.X	for the season 31.X – 31.III
Up to 1640 h	Up to 400 h

- Solar energy resource - 4 kWh/m<sup>2</sup>/ per day or 1450 kWh/m<sup>2</sup> per year

- **Northeastern region** - takes about 50% of the country's territory and 60% of the population. The area covers agricultural areas and industrial zone, as well as a part of the central northern coastline.

- Average annual length of sunlight

For the season 31.III- 31.X	for the season 31.X – 31.III
Up to 1750 h	Up to 400 - 500 h

- Solar energy resource - 4.25 kWh/m<sup>2</sup>/ per day or 1450 - 1500 kWh/m<sup>2</sup> per year

- **Southeastern and Southwestern region** - takes about 10% of the country's territory and 10% of the population. The area covers the southern coastline.

- Average annual length of sunlight

For the season 31.III- 31.X	for the season 31.X – 31.III
Over 1750 h	Over 500 h

- Solar energy resource - 4.25 kWh/m<sup>2</sup>/ per day or 1550 kWh/m<sup>2</sup> per year



Average annual solar radiation (kWh/m2)

Production of energy by the photovoltaic power plant is directly influenced by the geographical position of the site, the daily dose of radiation reaching it and the index of transparency.

Solar energy is the energy that reaches a unit of surface for a unit of time. Measurement unit is kWh/m<sup>2</sup> per day.

Index of transparency of the air reflects the solar radiation reaching the Earth surface from the atmosphere which has a value of between 0 and 1.

High index of transparency means that the air has a high level of cleanliness and there are no obstacles for the solar radiation.

Geographical latitude of the site defines the amount of solar radiation and impacts the measuring of strings of the photovoltaic system.

The theoretical data and calculations of the solar radiation and the data of its distribution for a static metal construction and such with a tracking system for Area 1 and Area 2 are provided in Annex 4.

### 3.4.4 Technologies for utilization of the evaluated resource potential

The used technologies are provided in Annex 5.

### 3.4.5 Forecast annual production of energy

Based on the results obtained and the recommended technology for this field, the economic forecasts envisage the following average annual production:

For Area 1:

Technology	<i>PVGIS-CMSAF</i>
Crystal	1720 kWh/kWp

Losses registered in the system for 1 kW: - Temperature losses: - Losses from reflections: - Losses in cables, invertors, transformers etc.:	8.6% 2.8% 10%
Thin-ply	1720 kWh/kWp
Losses registered in the system for 1 kW: - Temperature losses: - Losses from reflections: - Losses in cables, invertors, transformers etc.:	1.0% 2.8% 10%

For Area 2:

Technology	<i>PVGIS-CMSAF</i>
Crystal	1720 kWh/kWp
Losses registered in the system for 1 kW: - Temperature losses: - Losses from reflections: - Losses in cables, invertors, transformers etc.:	8.7% 2.7% 10%
Thin-ply	1720 kWh/kWp
Losses registered in the system for 1 kW: - Temperature losses: - Losses from reflections: - Losses in cables, invertors, transformers etc.:	1.1% 2.7% 10%

### 3.4.6 Risk assessment

Recommendations for management of the separate types of risks are given in Table 8. Due to the fact that each separate investment project is unique on its own, a specific risk assessment must be made and specific measures for minimizing them must be laid out. The main risks are:

- Snow - danger from accumulation of snow on the panel surfaces, leading to reduction and termination of energy production.
- Wind - danger of compromising the load-bearing construction, which may lead to breaking off and falling of the panels.
- Future shading - danger from shading by buildings and facilities built subsequently in the vicinity of the solar park.

**Table 8** Types of risks related to photovoltaics and their management

№	Type of risk	Management
1	<b>Resources</b>	
	Shading;  Cloudiness.	The construction site of the photovoltaic park must be selected so as to be at a sufficient distance from properties under construction and within regulation; Unmanageable
2	<b>Technical</b>	

№	Type of risk	Management
	<ul style="list-style-type: none"> <li>– changes existing technologies with new ones (investment);</li> <li>– existing competitive technology (cost-effectiveness);</li> </ul>	
	Development and implementation of the investment designs;	References for design teams
	Quality of equipment	References for suppliers; Negotiating long warranty periods for functionality of installations and achieved project parameters
	Quality of installation	References of installation company
3	<b><u>Investment</u></b>	
	Price of technology; Cost price of produced energy.	Feasibility analyses. Assessment of static and dynamic financial and economic indicators. Evaluation of market potential
	Opportunity for ensuring acceptable grant scheme for implementation of the project	Development of a quality investment design and project proposal for application under the relevant grant scheme
	Opportunities for ensuring own co-financing and eventual bank loan	Well-developed business plan. Awarded project for grant financing under an European Programme, guaranteeing better loan conditions. Well-developed schedule, related to delivery periods and periods for receiving funds.
4	<b><u>Operational</u></b>	
	Maintenance frequency	Automated monitoring and management system
	Snow coverage	Photovoltaic panels must be mounted on constructions at such a height as to ensure that snow cover remains always underneath them.
	Strong gusts of wind	Constructions and supporting elements must be sized in such a manner as to sustain even the strongest winds, according to the meteorostatistics of the region.
	Guaranteed result from operation	Staff training
	Process maintenance, repairs and supply of spare parts	Contracts for warranty and post-warranty maintenance
	Encroachment upon the facilities	Security, Insurance
5	<b><u>Environment and perception</u></b>	
	Impact on the environment; Perception by the public; Influence on the local economy	EIA and preventive measures during construction and operation
6	<b><u>Political</u></b>	
	Change of legislation; Introduction of new rules and ordinances; Environmental restrictions and prohibitions	Unmanageable risk;
7	<b><u>Market</u></b>	
	Changes in preferential prices	Close monitoring of the dynamics of the

№	Type of risk	Management
		process and, if possible, signing long-term contracts for purchasing of electrical energy
8	<b><u>Financial and economic risk</u></b>	Unmanageable risk;

### 3.4.7 Evaluation of information reliability

For the preparation of the solar energy section of the report, no additional measurements have been made at the relevant terrains in the municipality, but publicly accessible data has been used with history from state and municipal services, as well as the use of specialized software..

In order to receive more accurate and up-to-date information it is necessary to make a research and measurement on-the-spot and to collect data of the specific area for at least one year. This is the working objective during the development of a detailed works design for the relevant RES.

## 3.5 WIND ENERGY

### 3.5.1 Assessment of the area

Before the installation of a wind system, the availability of sufficient potential for its operation must be checked. Necessary information could be taken from statistical reports from the Institute for Meteorology and Hydrology, or own measurements of the indicators in the selected site could be done.

Locations selected for the installation of wind turbines have been picked according to the theoretical rationale of Bulgarian Academy of Science (return on investment at over 1 000 m above sea level and a certain wind speed), as well as based on their accessibility for transportation and installation of machinery.

#### ➤ Area 1

(provisionally named WindGenerator1)

#### ❖ Geographic coordinates

The exact coordinates of the area are shown below, as well as satellite images and photos.

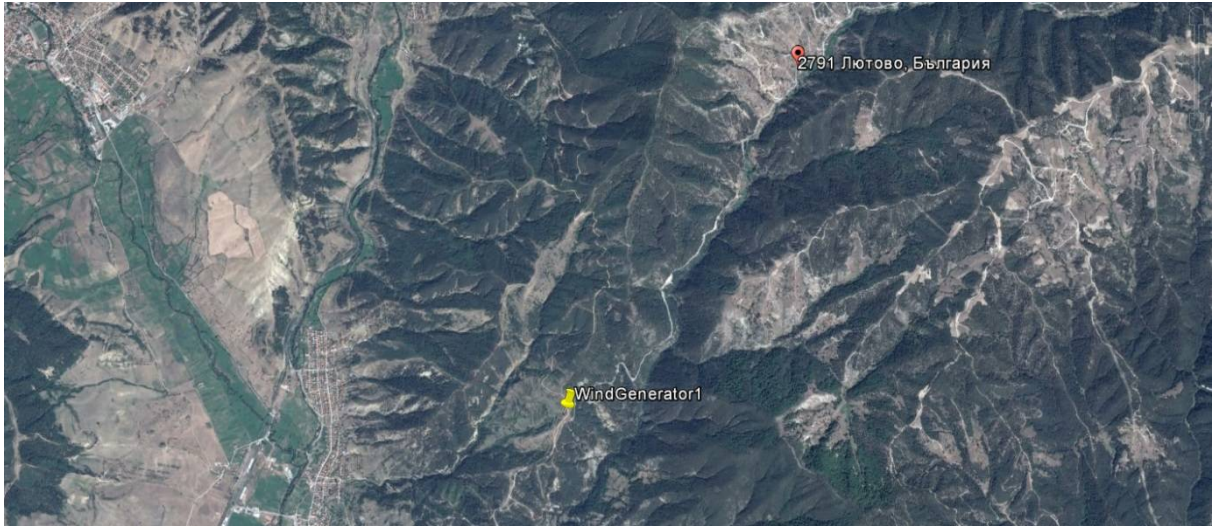
N 41 ° 55'19 .88 "

E 23 ° 36'37 .19 "

Altitude 1040 m.

The distance from the site to the administrative center of the municipality Belitsa is about 20 km, near the road Dolno Kraishte - Lyutovo; at 4 km from Lyutovo village.

Coniferous trees up to 10 m high predominate on the site, which is evidenced on the attached photos.



The selected location is easily accessible for installations and operation. It is close to a relatively passable asphalt road which facilitates the work of heavy machines.

The soil is firm and able to bear concrete foundations on the surface or in non-freezing depth.

Exact conditions of installation will be clear after a detailed geological survey of the soil.

➤ **Area 2**

(provisionally named WindGenerator2)

❖ **Geographic coordinates**

The exact coordinates of the site are shown below, as well as satellite images and photos.  
N 41 ° 56'24 .95 "

E 23 ° 34'29 .71 "

Altitude 850 m.

The distance from the site to the administrative center of the municipality Belitsa is about 1 km.



Coniferous trees up to 10 m high predominate on the site, which is evidenced on the attached photos.

### 3.5.2 Evaluation of the resource

For defining the wind energy resource were used the models embedded in the following websites:

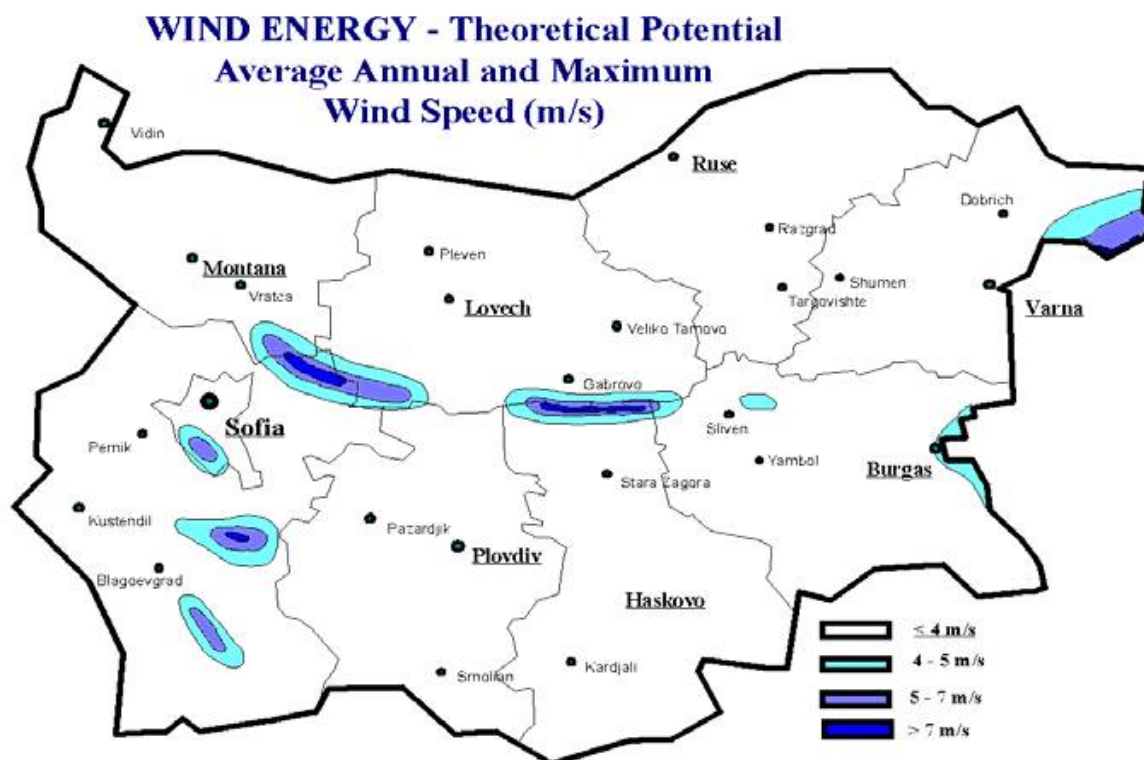
- [www.meteonorm.com](http://www.meteonorm.com);
- NASA – Database on meteorology and solar energy – [www.eosweb.larc.nasa.gov/cgi-bin/sse/grid.cgi](http://www.eosweb.larc.nasa.gov/cgi-bin/sse/grid.cgi)

### 3.5.3 Evaluation of the potential

In Bulgaria there is existing potential for construction of wind farms in the coastal line and in the areas above 1000 m a.s.l. The future development in suitable mountain areas and such with lower wind speeds depends on the implementation of new technical solutions.

The operation of the turbine depends on the speed and turbulence of the wind, the height of the tower and density of the air, therefore it is important to know the potential in the area of the country selected for installation, as well as the conditions in which it was established.

There are 119 meteorological stations in Bulgaria, which register the speed and direction of the wind. There are data for a period of more than 30 years.



**Figure 3. Map of the wind potential**

As a whole, the wind energy potential of Bulgaria is not big. The assessments are that an area of 1400 km<sup>2</sup> have an average annual wind speed over 6,5 m/s, which is actually the threshold of economic viability for a wind energy project.

The accessible energy potential of the wind energy is defined after taking into account of the following main factors:

- highly difficult construction and operation of wind facilities in urbanized territories, reserves, military bases and other specific territories;
- uneven distribution of wind energy resource during the separate seasons of the year;
- physic-geographic peculiarities of the country's territory;
- technical requirements for installation of wind generator facilities.

The main shortcoming is also the peak energy production from wind generators is around 4 o'clock in the morning when the consumption is the smallest.

The energy potential of the wind energy, taken as an annual average at an elevation 10 m above the Earth's surface, may be provisionally divided into three areas:

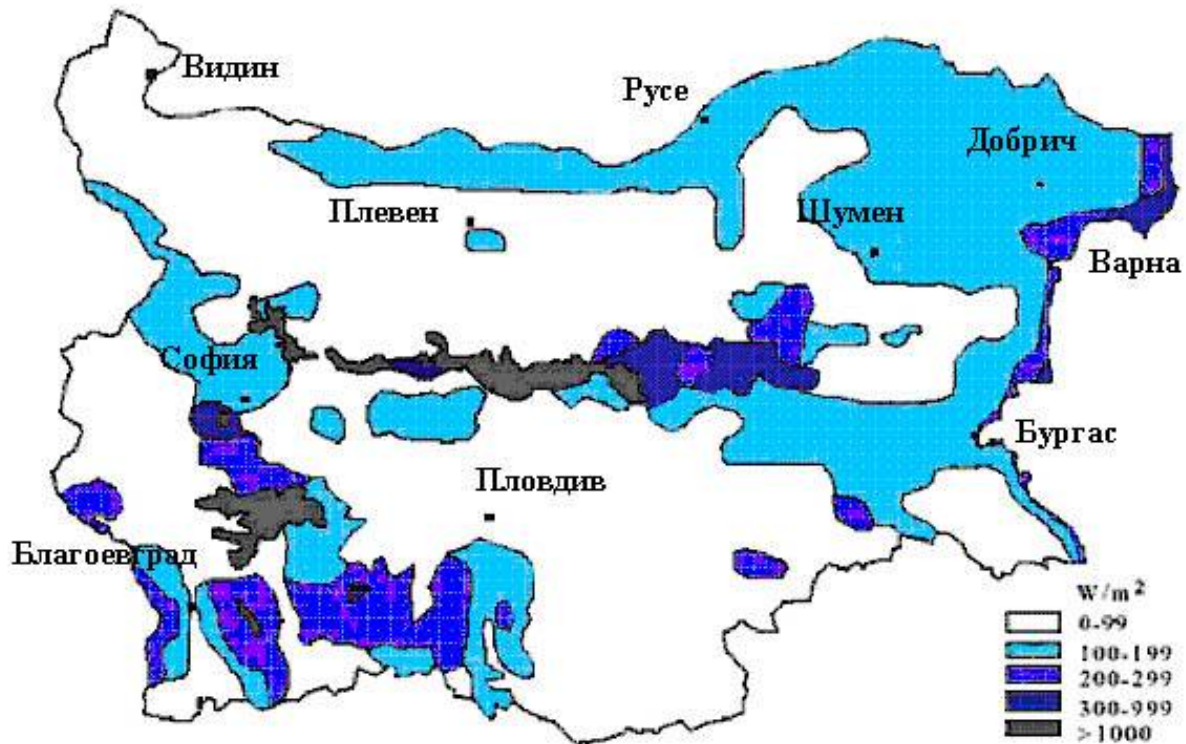
**The first area (Area A)** includes the spacious plain areas of the country (the Danube Plain, the Thracian Valley, Sofia Plain, the valeys of the Struma and Mesta rivers and the Predbalkana region), where the average multiannual wind speed does not, as a rule, exceed 2 m/s. The highest wind speed there is in the winter (February, March), and the lowest - in autumn (september, October). There is a well-pronounced overnight course of the wind speed, due to the existence of a mountain - valley circulation in the Prebalkan.

**The second area (Area B)** comprises of parts of the country, which are situated to the north of the line Rousse - V. Tarnovo - Elhovo and the Danube coastline, as well as the open lower-mountain parts up to an altitude of around 1000 m, where the average multiannual wind speed fluctuates from 2 to 4 m/s. The annual maximum of the speed is during the winter (February, March), and the overnight - during the day. The minimum wind speed here is in the end of the

summer and the beginning of autumn (August, September). Along the Black sea coast a certain shift in the annual course of speed is observed: the maximum is in February, and the minimum - in June, July. In the parts of the land jutting out in the sea (the capes) the average wind speed exceeds 4 m/s.

The third area (Area C) unites the open and deforested mountain areas with altitude above 1000 m. It is distinguished by high average wind speeds, significantly exceeding 4 m/s. The maximum speed here is in the winter (February), and the minimum is in the summer (August). The overnight course of speed is well-traced only in the transitional seasons - the maximum is during the night, and the minimum during the day.

It should be noted that the average wind speed is not an indicator representative of the assessment of the wind as an energy source. For this reason the density of the wind energy stream is used, as presented in Fig. 4.



**Figure 4. Scheme map of the wind energy density at a height of 10 m above the ground. It is measured in  $W/m^2$  from the ground.**

The reduction of the air density with the altitude requires the increase of the average wind speed by about 3% per 1000 m in order to define the same energy density.

The criteria on the basis of which assessment of the wind energy potential is made, are its direction and annual average speed. For this purpose, data from project BG 9307-03-01-L001, ""Technical and Economical Assessment of RES in Bulgaria"" under the PHARE Programme, 1997, obtained by the Institute of Meteorology and Hydrology at BAS (119 meteorological stations in Bulgaria, recording wind speed and direction). Data covers a period of more than 30 years and are of general character. On this basis, the division by regions of the country is made, based on the wind potential.

#### ***Forecasts for the development of wind energetics in the republic of Bulgaria***

The opportunity to utilize the available potential of wind energy depends on the economic evaluation of the investment and operational expenditure for maintenance of the technologies for its transformation. The future development of wind energetics in suitable mountain areas and such with lower wind speeds depends on the implementation of new technical solutions. The rapid development of wind technology in the last years allowed for the use of generator facilities at wind speeds of 3-3,5 m/s. Small wind generators are a good investment for owners of houses, farms,

greenhouses, as well as the small and medium enterprises. The report "2004, Survey of Energy Resources" of the World Energy Council points out that the following example generators may be installed here:

Small wind potential area: wind generators with capacity from several to several dozen kW may be installed. It is possible to include standalone multi-blade generators for transformation of wind energy and of PV-hybrid (photovoltaic) systems for water pumps, mills, etc. The situation of these facilities is the most appropriate in an area with small wind potential in areas where the density of the energy stream is above 100 W/m<sup>2</sup>.

Average wind potential area: 3-blade turbines with installed capacity from several dozen to several hundred kW may be installed. In this area the energy stream density is between 100 and 200 W/m<sup>2</sup>.

Strong wind potential area: 2- or 3-blade turbines may be installed, with capacity from several hundred kW to several MW. Such facilities are usually grid-connected wind power plants. The height of the pole (tower) is between 50 and 100 m, but it may be higher, depending on the length of the blades.

Tables with the wind potential in the country are provided in Annex 6.

Theoretical and technical potential cannot be determined without additional measurements on the spot taken for at least a year.

As a starting point, however, values of energy stream shown in Fig. 4 above can be taken.

### 3.5.4 Technologies for utilization of the evaluated resource potential

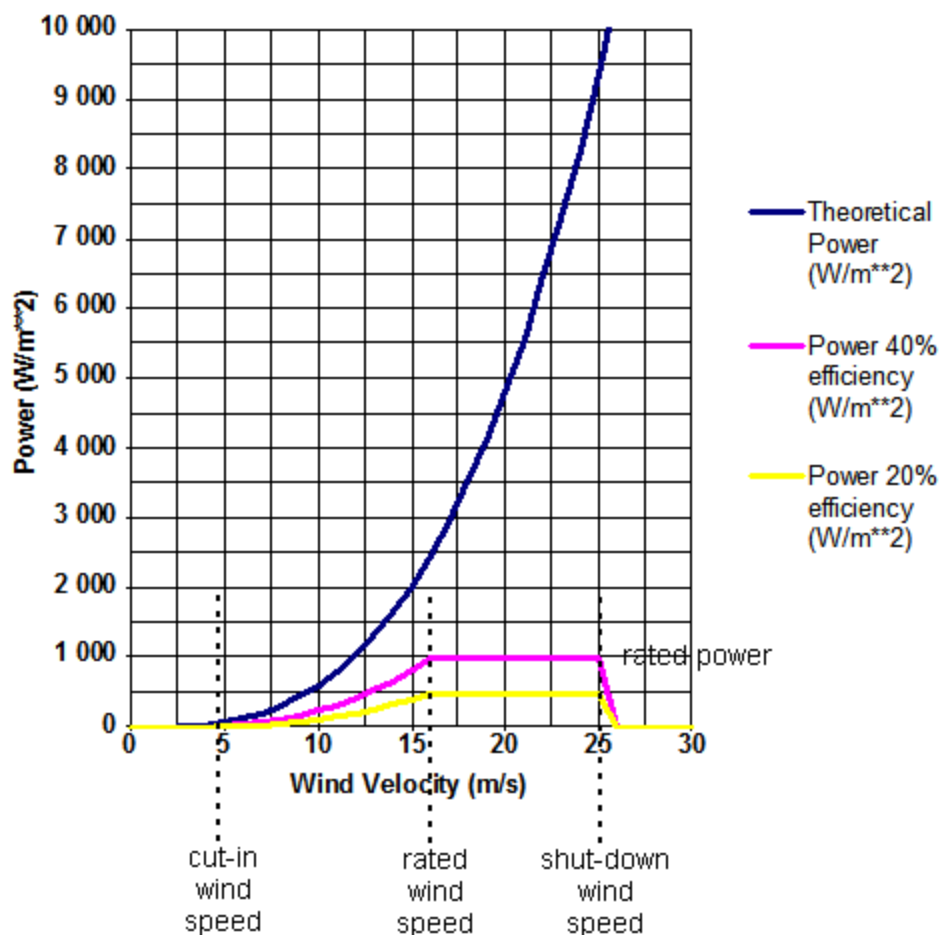
Since the areas are in proximity, the data of the two areas are summarized.

Municipality of Belitsa is within an area of small wind energy potential. The characteristics of this area are:

- Average wind speed - 6 ÷ 7 m / s;
- Energy potential - 100 W/m<sup>2</sup> (Less than 1450 kWh/m<sup>2</sup> per year);
- Average duration of the speed range  $\sum \tau_5 - 25 \text{ m/s}$  in this area is about 1000 h, which represents about 12% of the number of hours over the year.

**Table 9** Average wind speed in m/s by bearings for the Belitsa station (936 ÷ 1000 m altitude)

<i>Bearing/ month</i>	<i>1</i>	<i>2</i>	<i>3</i>	<i>4</i>	<i>5</i>	<i>6</i>	<i>7</i>	<i>8</i>	<i>9</i>	<i>10</i>	<i>11</i>	<i>12</i>
<i>N</i>	3.8	3.3	3.6	2.7	4.3	4.3	3.3	6.8	4.3	2.6	4.0	5.0
<i>NE</i>	3.3	3.0	3.2	2.6	3.4	2.9	2.5	3.8	3.2	1.9	4.5	4.8
<i>E</i>	8.5	3.6	3.1	4.5	3.2	3.1	3.1	4.3	4.4	5.1	7.5	5.8
<i>SE</i>	4.0	7.0	3.6	3.4	3.0	2.6	2.6	4.0	3.2	4.3	3.0	9.0
<i>S</i>	3.0	1.5	8.3	2.3	2.8	2.2	3.7	5.0	3.0	2.7	2.5	3.0
<i>SW</i>	3.7	5.3	6.3	6.7	2.9	4.7	6.1	4.0	9.0	3.9	5.3	5.5
<i>W</i>	5.7	6.0	6.3	6.0	6.6	6.1	6.5	6.2	6.1	6.1	8.2	7.0
<i>NW</i>	8.8	6.1	5.0	6.4	5.3	5.8	4.8	4.7	5.2	4.8	7.5	5.6



Most turbines are designed to switch off at speeds above 25-30 m/s to avoid damage. More powerful turbines switch on at wind speeds above 5 m/s.

The spatial distribution of wind energy is based on lines and surfaces of same values of the power stream density expressed in classes. In Table 10 seven wind classes are identified according to the density of wind energy flow, with their distinctive parameters defined for two different heights: 10 m above the ground (at which wind measurements are done in all meteorological stations across the world) and 50 m.

**Table 10 Wind classes**

Ветрови клас	h = 10 m		h = 50 m	
	Плътност на енергийния поток, W/m <sup>2</sup>	Скорост на вятъра, m/s	Плътност на енергийния поток, W/m <sup>2</sup>	Скорост на вятъра, m/s
1	0...100	0...4,4	< 200	< 5,6
2	100...150	4,4...5,1	200...300	5,6...6,4
3	150...200	5,1...5,6	300...400	6,4...7,0
4	200...250	5,6...6,0	400...500	7,0...7,5
5	250...300	6,0...6,4	500...600	7,5...8,0
6	300...400	6,4...7,0	600...800	8,0...8,8
7	> 400	> 7,0	> 800	> 8,8

Analysis of data in the table shows that at height equal to 50 m, wind stream density is twice as high than at a height of 10 m. At the higher altitude wind speed increases by about 25% for each wind class. There are interesting variations in the wind parameters at other heights: 30 m and 80 m. It has been proven that the density of energy stream at a height of 80 m is slightly greater than at 50 m: by 10 ÷ 20%, while speed is also higher, but only 1 ÷ 6%. Values of these parameters at 30 m rank between those relating to 10 m and 50 m.

### 3.5.5 Forecast annual production of energy

In choosing turbines, beside the wind speed, the diameter of the rotor is also taken into consideration.

Turbines of the Enercon and Vestas companies are given as an example:

It is assumed that for the purposes of the calculation made, the speed is 5 m/s, while the height of the tower for the gondola is minimum 70÷75 m.

Company	Machine model	Diameter of the rotor, m	Power, kW
Vestas	V90-1,8/ 2,0 MW	90	95.42
	V110- 2,0 MW	110	142.55
Enercon	E-82 E2 / 2,000 kW	82	79.21
	E-70 / 2,300 kW	71	59.38

At lower wind speed lower power wind generators will be more economical.

On the basis of these data it can be concluded that the forecast annual energy production from wind turbines is less than 1450 kWh/m<sup>2</sup> per year.

### 3.5.6 Risk assessment

Recommendations for management of the separate types of risks are given in Table 11. Due to the fact that each separate investment project is unique on its own, a specific risk assessment must be made and specific measures for minimizing them must be laid out. The main risks are:

- Birds and bats - danger of collision of animals with the wind generator's blades. In general, this does not influence the integrity of the blades and does not pose a danger to equipment, but has a negative impact on the population of the protected species in particular.
- Noise - danger of exposing the inhabitants of the area to noise levels around 100 dB(A);
- Vibrations - danger of exposing to potentially dangerous levels of vibration, caused by the spinning of the rotor;
- Hurricane winds - danger of developing critical revolutions of the rotor, leading to disintegration of the rotor and/or the entire construction, endangering persons, animals and buildings in the vicinity with strike from flying debris.

**Table 11 Types of risks related to wind parks and their management**

№	Type of risk	Management
1	<b>Resources</b>	
	Calm weather	Unmanageable
2	<b>Technical</b>	
	– changes existing technologies with new ones (investment);	
	– existing competitive technology (cost-effectiveness);	
	Development and implementation of the investment designs;	References for design teams
	Quality of equipment	References for suppliers; Negotiating long warranty periods for functionality of installations and achieved project parameters
	Quality of installation	References of installation company

№	Type of risk	Management
3	<p><b><u>Investment</u></b></p> <p>Price of technology; Cost price of produced energy.</p> <p>Opportunity for ensuring acceptable grant scheme for implementation of the project</p> <p>Opportunities for ensuring own co-financing and eventual bank loan</p>	<p>Feasibility analyses. Assessment of static and dynamic financial and economic indicators. Evaluation of market potential</p> <p>Development of a quality investment design and project proposal for application under the relevant grant scheme</p> <p>Well-developed business plan. Awarded project for grant financing under an European Programme, guaranteeing better loan conditions. Well-developed schedule, related to delivery periods and periods for receiving funds.</p>
4	<p><b><u>Operational</u></b></p> <p>Maintenance frequency</p> <p>Flying birds and bats</p> <p>Hurricane winds</p> <p>Vibrations</p> <p>Noise</p> <p>Guaranteed result from operation</p> <p>Process maintenance, repairs and supply of spare parts</p> <p>Encroachment upon the facilities</p>	<p>Automated monitoring and management system</p> <p>Construction in areas relatively safe for flying and nesting birds and bats</p> <p>Although contemporary wind generators are equipped with safety from hurricane winds, as a precaution, the wind park may be positioned outside residential areas.</p> <p>Construction in areas with sufficient distance from residential areas</p> <p>Construction in areas with sufficient distance from residential areas</p> <p>Staff training</p> <p>Contracts for warranty and post-warranty maintenance</p> <p>Security, Insurance</p>
5	<p><b><u>Environment and perception</u></b></p> <p>Impact on the environment; Perception by the public; Influence on the local economy</p>	<p>EIA and preventive measures during construction and operation</p>
6	<p><b><u>Political</u></b></p> <p>Change of legislation; Introduction of new rules and ordinances; Environmental restrictions and prohibitions</p>	<p>Unmanageable risk;</p>
7	<p><b><u>Market</u></b></p> <p>Changes in preferential prices</p>	<p>Close monitoring of the dynamics of the process and, if possible, signing long-term contracts for purchasing of electrical energy</p>
8	<p><b><u>Financial and economic risk</u></b></p>	<p>Unmanageable risk;</p>

### **3.5.7 Evaluation of information reliability**

For the preparation of the wind energy section of the report, no additional measurements have been made at the relevant terrains in the municipality, but publicly accessible data has been used with history from state and municipal services, as well as the use of specialized software..

In order to receive more accurate and up-to-date information it is necessary to make a research and measurement on-the-spot and to collect data of the specific area for at least one year. This is the working objective during the development of a detailed works design for the relevant RES.

## **3.6 ELECTRICAL CONNECTION OF NEW RES FACILITIES**

Reviewing the construction of RES for production of electricity, inevitably we must examine the opportunities for connecting that capacity to the existing power grid or a certain electrical consumer. Accordingly, the voltage levels at which RES capacities are connected, are divided as follows:

- LV - Low Voltage: 0,23/0,4 kV;
- MV - Medium Voltage 6 kV, 10 kV, 20 kV;
- HV - High Voltage: 110kV.

All three voltage levels are possible for connection of new RES capacities, where the choice is determined by:

- The size of the connected capacity;
- The existing constructed power grid;
- The point of connection of the new capacity to the power grid, defined by the relevant electrical company ("NEC" EAD or "CEZ Electro Bulgaria" AD).

The points for connection of the new RES capacities are defined following a research by the relevant electrical company ("NEC" EAD or "CEZ Electro Bulgaria" AD) concerning the possibility for connecting new RES capacities. The relevant company issues a statement indicating the location and possibility for connecting these capacities.

The possible connection points are:

- The existing constructed power grid, at the relevant voltage levels;
- Existing constructed electrical substations MV/HV, junction stations MV/MV and substations MV/LV.

the manners of connecting new RES capacities are defined after clarification of the exact place for their connection. The possible connection methods are:

- Construction of new power lines (cables or aerial) at the relevant voltage levels, for connection to the existing constructed power grid;
- Construction of the necessary new facilities in the existing power grid, in order to carry out the connection;
- Reconstruction of the existing electrical installations in the MV/HV substations, junction stations MV/MV and substations MV/LV, defined as connection points.
- Construction of the necessary new electrical facilities within the limits (territory) of the new RES capacities, in order to implement the electrical connection.

### **3.6.1 Risk assessment**

#### *3.6.1.1 Risk assessment*

*Factors affecting the electrical connection of new RES capacities:*

- Long approval procedures with different stakeholder institutions concerning the construction of new RES capacities;
- Difficulties in the expropriation of private properties affected by the construction of new RES capacities;
- Poor existing infrastructure;
- Poor technical condition of the existing power grid;
- Difficulties in the technical implementation of the electrical connection to the existing power grid;
- Encroachment on the constructed electrical facilities before their putting into operation.

*3.6.1.2 Recommendations for management of risks;*

- The choice of place for constructing the new RES capacities should be considered so as to reduce to the minimum the approval procedures with the stakeholder institutions;
- The choice of place for constructing the new RES capacities should be considered so as to reduce to the minimum the expropriation of affected private properties;
- The choice of place for constructing the new RES capacities should be considered so that the existing infrastructure does not impede the construction of the new capacities;
- The choice of the place for constructing the new RES capacities should be considered so that the existing power grid, to which the connection will be made, is in good technical condition, in order to avoid the necessity for a major reconstruction;
- Overnight security of the constructed electrical facilities until their putting into operation.

## 4 ZRNOVCI MUNICIPALITY

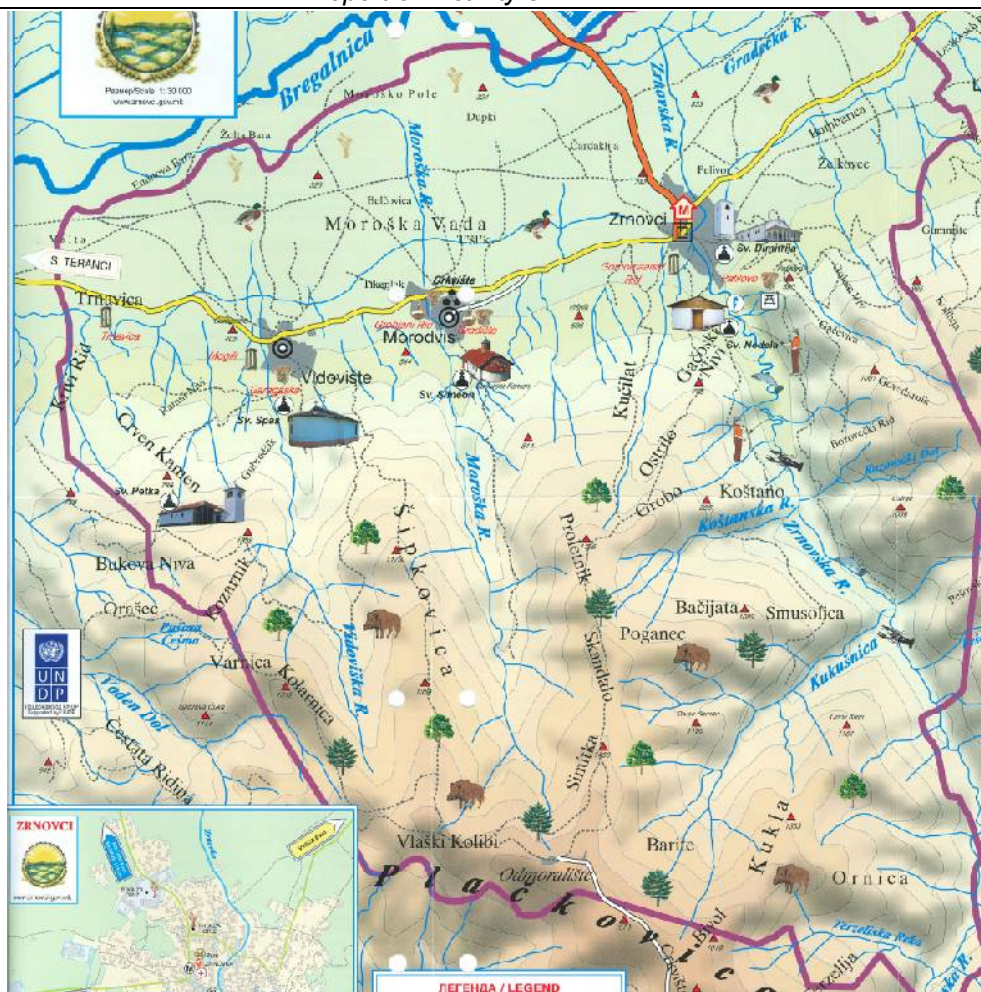
### 4.1 General description

Zrnovci municipality is one of the smaller municipalities in the eastern part of the Former Yugoslav Republic of Macedonia with a territory of 55,82 km<sup>2</sup> and a population of 3 112 inhabitants according to the state statistics data as of 2012. It is situated along the cross-border highway connecting Skopje-Veles-Shtip-Kochani-Delchevo with the Republic of Bulgaria. Zrnovci village is the administrative center of the municipality. Being mainly agricultural area, Zrnovci is one of the least environmentally polluted. It is located in the skirts of Plachkovica Mountain, i.e. in the zone of the Serbian-Macedonian massif or the “old” Rhodope mountain.

It is 8 km away from the closest railway in the town of Kochani, 134 km from the capital Skopje, 118 km from the international airport Alexander the Great (near Skopje) and 60 km from the border crossing point Delchevo-Bulgaria.



Location of the municipality in FYROMacedonia



Borders of Zrnovci Municipality

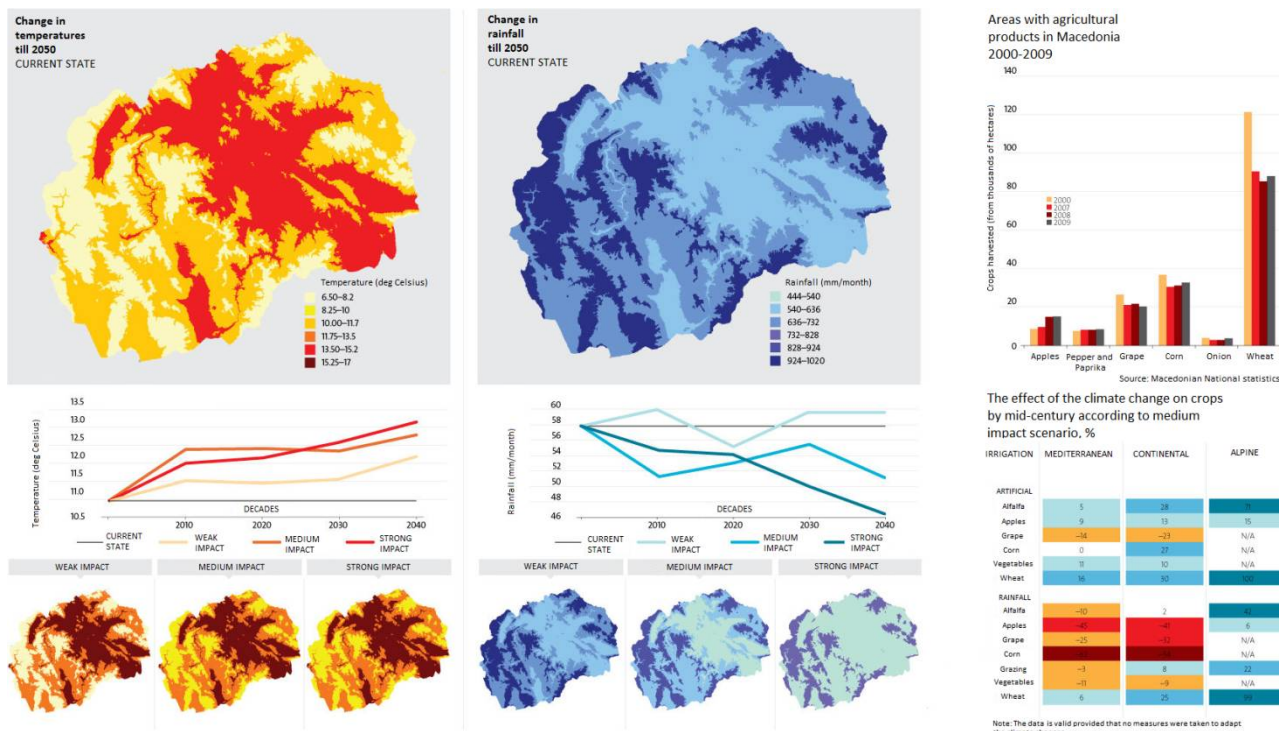
The largest village Zrnovtsi, which is the center of the municipality is located in the eastern part of Macedonia at an altitude of 345 m, in the Kochani valley, just at the foot of Plachkovitsa mountain on an area of 2 848 decars. Zrnovtsi is protected from the strong northern winds by the Ossogovska mountain, and from the strong air intrusions from south by the Plachkovitsa mountain. Out of the whole territory of Zrnovtsi 57% is forests and 32% is agricultural land. The majority of the arable land are rice fields.

#### 4.1.1 Natural Resources

- Relief

The area is mostly mountainous. Through Zrnovtsi passes Zrnovska River, which is one of the largest tributaries of the Bregalnitsa river. A hydroelectric plant was built here, which changed the river and the environmental conditions in it to some extent. The river and its basin are particularly important for the town as they are rich in flora and fauna. Other natural objects are Buovitsa and Poganechka springs which have very cold and clear mountain water, Divata Topola in Vidovishte, the natural lake Sulyov Puddle. There is presence of endemic trout and endemic crabs in the upper stream of Zrnovska river.

• **Temperature and rainfall values**



• **Climate**

The climate is moderate continental with mountainous and Mediterranean climatic influence. It is characterized by warm, dry summers and autumns and relatively cold winters with heavy snowfall.

Climate parameters in the municipality of Zrnovtsi are: average annual temperature 13° C; average relative air humidity 71%; average annual precipitation 547.9 mm.

• **Soils**

Brown forest soils predominate, while in the river valleys soils are alluvial-meadow.

- **Brown forest soils** - (Photo 1) sandy clay soils. They are the most widespread soils in mountainous areas above 600 m altitude. They are rich in humus – up to 12% content, but the humus substance is not a very good quality – the process of humification was not completed. The reaction is slightly acidic - pH 5,5 ÷ 6 They are medium-stocked with easily absorbed nitrogen and phosphorus They are usually covered with forest vegetation as they are rarely used for agriculture (mostly for potatoes). In the higher parts of the mountains brown forest soils turn into dark colored forest and mountain-meadow soils. On the surface, there is usually 5 cm litter of dead organic debris, followed by a layer of 10 to 60 cm of humus-accumulative horizon. They are fragmented – contain sharp stones across the profile.
- Alluvial and alluvial-meadow soils - (Photo 2a and photo 2b) distributed on I and II terraces above the rivers in the country. They are rich in stone and humus substances, are highly water-permeable and suitable for growing vegetables. The main activities for increasing of their fertility, besides fertilizing, are aimed at protecting them from flooding by the rivers, as well as swamping and salination.



Picture 1



Picture 2a



Picture 2b

- **Cultural and historical heritage**

Morodvis village is well-known for its archeological landmark Crkvishte which is situated in the center of the village. It represents the medieval city Morobizdon which was the cultural, economic and political center of Eastern Macedonia for a millennium. Moroshka River runs through the village and the village is surrounded by sycamore trees.

- **Water resources**

#### **Water supply system of Zrnovci municipality**

A water supply system was built to supply settlements in Zrnovtsi municipality that consists of a pressure pipeline connected to a penstock drawing water from a water tower, water treatment plant, mechanical filters located on the right-hand slope, as well as a feeding pipeline to a tank (P1) supplying the village and connected to tanks P2 and P3 supplying the other settlements in the municipality. Water supply system is designed with capacity of 21 l/s.

## **4.2 ENERGY FROM WATER SOURCES**

### **4.2.1 Description of the subject of the research**

Subject of this research is drawing up of a list of areas suitable for production of energy from RES. Based on the checks done of the suitable areas in Zrnovci Municipality - FYROM and based on the information gathered in the process, several areas have been identified as suitable for production of energy from RES.

### **4.2.2 Assessment of the area**

#### *a) Field research of the area;*

The information about the conditions of the area was taken from the topographic maps, as well as from the field trips for informing about the area conditions, geology, access roads, opportunities for connecting to the electrical network, etc. Satellite data about the environment are also a proven valuable source of information.

Different mapping materials have been used for the purpose of preliminary assessment of the potential for production of electricity from water sources in Zrnovci Municipality, namely:

- Topographic maps of Zrnovci, in scale 1:50 000
- Topographic maps of Zrnovci, in scale 1:25 000
- Satellite images from Google Earth

On-the-spot visits have been made to all potentially usable areas for production of electricity from water sources in Zrnovci Municipality.

*b) Location and exact coordinates;*

In Annex 1 (Map 2) is given a map of Zrnovci Municipality.

❖ Geographic coordinates

The exact geographic coordinates of the area are:

SHPP Zrnovci-2:

N 41°51'05";

E 22°27'05"

### 4.2.3 Evaluation of the resource

Several rivers run through the municipality, with the largest being Zrnovska river running through the village of Zrnovtsi. The watershed of the river is 38 km<sup>2</sup>, and its length is 24 km. There is a HPP constructed on the river. Other major rivers on the territory of the municipality are Moroshka river passing through the village Morodvis with 7 km<sup>2</sup> watershed and length of 6 km and Vidovishka river passing through the village Vidovishte with 5 km<sup>2</sup> watershed and length of 6 km.

*a) Used methodology and models;*

Data from other hydrology research and studies in neighbouring river valleys have been used in the present research.

Hydrographic, hypsographic and other characteristics of the water sources have been established on the basis of maps in scale M 1:25 000.

The main hydrological parameters of the flux have been calculated on the basis of multiannual measurements of the water quantities in different hydrometric stations situated along the valleys of the rivers in the municipality.

### Water Supply Systems

A water supply system was built to supply settlements in Zrnovtsi municipality that consists of a pressure pipeline connected to a penstock drawing water from a water tower, water treatment plant, mechanical filters located on the right-hand slope, as well as a feeding pipeline to a tank (P1) supplying the village and connected to tanks P2 and P3 supplying the other settlements in the municipality. Water supply system is designed with capacity of 21 l/s.

*b) main parameters – general information on the sources;*

### Description of hydrological regime of rivers

Basic hydrological parameters have been determined based on observations in the period 1961 ÷ 2000.

### Zrnovska river

- Orohydrographical characteristics

Zrnovska river is a left tributary to Bregalnitsa river. It sources from the mountain tops of Plachkovitsa mountain at an altitude of over 1700 m. The total watershed area is 70 km<sup>2</sup>, stretching from the tallest peak Lisets to the inflow to Bregalnitsa river at elevation 325.0 m. The length of the river is 22 km, the average altitude of the watershed is 1160 m, and the river has an average incline of J=0.255%. The larger left tributaries of Zrnovska river are Boshalichka, Yaskamska, Eden dere, Kukushnitsa rivers, and of the right ones the largest is the Lisechka river.

- Basic hydrological characteristics

**Table 12. Basic hydrological parameters of Zrnovska river**

Month	I	II	III	IV	V	VI	VII	VIII	IX	X	XI	XII	Q <sub>av.an.</sub> (m <sup>3</sup> /s)
Q <sub>min</sub>	0.093	0.062	0.062	0.227	0.161	0.085	0.046	0.054	0.054	0.062	0.085	0.101	0.046
Q <sub>av</sub>	1.108	1.397	1.357	1.509	1.151	0.717	0.405	0.272	0.231	0.377	0.596	0.91	0.836
Q <sub>max</sub>	13.16	36.01	19.55	7.71	12.2	12.78	27.01	14.04	8.38	13.16	13.75	18.88	36.01

#### 4.2.4 Evaluation of the potential

##### a) Used methodology and models;

The potential for construction of a small HPP is defined by the water quantity at the water intake and the location of the power plant on the river course. The height difference between the two spots is defined as Hydraulic (gross) pressure ( $H_{gr}$ ).

The evaluation of the potential of a small HPP depends on the following factors:

- The serious variations in the natural debit of the water according to season, as well as the dry and wet periods of hydrological years. These specific characteristics are of particular importance concerning small fluxes.
- Types of hydro turbines. The types of hydro turbines are selected according to a specific range of the nominal hydraulic (net) pressure and nominal debit. Each has a different range of operation, different effectiveness, whose maximum depends on the nominal power of the turbine, the different sizes and price.

The water sources are with depleted potential, since there are hydro power plant constructed on them. The parts of the rivers free from construction have practically zero potential for production of electrical power. On the Zrnovska river was built “Zrnovtsi” HPP in 1950 and reconstructed in 2009 and is still in operation. The plant is of derivation type. It was built just above the village of Zrnovtsi.

##### *Basic parameters of Zrnovtsi HPP*

- Pressure: 220 m
- Water quantity for turbine: 1 m<sup>3</sup>/s
- Power: 2x630 kW
- Annual electricity production: 5 500 000 kWh

3 more HPP are foreseen to be constructed on Zrnovska river, thus depleting its potential for production of electrical energy.

Based on the available technical information and the examinations done on the spot, an area for construction of HPP in Zrnovtsi municipality has been selected, using the existing water mains.

##### b) Theoretical potential;

The theoretical energy potential of a certain section of a hydraulic stream is the quantity of potential energy of the water stream for one year, defined by the complete fall and the average multiannual flux of the reviewed section.

The use of hydraulic power is a combination of activities for transformation of the latter into electrical power, which takes place by means of hydro power plants.

The working principle in production of power from water is to turn the potential energy of the water stream in the reviewed section into electrical power by creating artificially or naturally a concentrated height difference between two water levels - called a fall (pressure) and concentration of the water quantity.

Essentially, the fast-flowing water is not sufficient for conclusive production, except in large power plants in the seas and oceans where streams are used. Therefore, two parameters are accounted for: water quantity (Q) and total pressure (H).

The total pressure (H) is the maximum possible height of waterfall from the upper stream level down to the lower stream level. The real height, however, would be a little less than the total, due to losses.

The water quantity (Q) in the river is the volume of water transferred through a certain section per second, measured in m<sup>3</sup>/s.

The theoretical energy potential of the selected stream is defined by the formula:

$$P = \rho \cdot g \cdot Q \cdot H$$

where:

- $P$  - average power of the water stream (W);
- $\rho$  - water density (1000 kg/m<sup>3</sup>);
- $g$  - Earth's acceleration (9.81 m/s<sup>2</sup>);
- $Q$  - the average water quantity which flows through the reviewed section for a certain period of time (m<sup>3</sup>/s);
- $H$  - total pressure.

For the reviewed section the theoretical potential for construction of a HPP is:

$$P = 1000 \cdot 9,81 \cdot Q_3 \cdot H_{gr} \text{ m} = 1000 \cdot 9,81 \cdot 0,021 \cdot 80 \approx 16\,480 \text{ W} = 16.5 \text{ kW}, \text{ where:}$$

- $Q_3$  – Constructed water quantity - *the water quantity with which the power plant will be working.*
- $H_{gr}$  - the gross pressure of the power plant (not accounting for losses)

*c) technological potential;*

The technological energy potential of a certain section of a hydraulic stream is the quantity of potential energy of the water stream for one year, defined by the net fall (accounting for pressure losses along the route from water intake to the power plant) and the average multiannual flux of the reviewed section.

The technological energy potential of the selected stream is defined by the formula:

$$P = c \cdot Q \cdot H_n$$

where:

- $P$  - average power of the water stream (kW);
- $c = \eta \cdot g - c \approx 8 \div 8,2$  for HPP with power less than 5000 kW
- $\eta$  - overall quotient accounting for efficiency of energy equipment;
- $\rho$  - water density (1000 kg/m<sup>3</sup>);
- $g$  - Earth's acceleration (9.81 m/s<sup>2</sup>);
- $Q$  - the average water quantity which flows through the reviewed section for a certain period of time (m<sup>3</sup>/s);
- $H_n$  - net pressure ( $H_n = H_n - h_{loss}$ );
- $h_{loss}$  - pressure losses from water intake to HPP.

For the reviewed section the theoretical potential for construction of a HPP is:

$$P = 8 \cdot Q_3 \cdot H_n \text{ m} = 8 \cdot 0,021 \cdot 80 = 13.4 \text{ kW}$$

#### 4.2.5 Technologies for utilization of the evaluated resource potential

*a) applicable technologies for the specific sources and areas;*

The main element in a small HPP is the hydro turbine. The turbines transform energy from water pressure into torque, but under different circumstances different types of turbines are used. The selection is made according to the characteristics of the spot, the height and volume of the

water quantity, the desired rotation speed of the generator and whether the turbine is expected to also work at slower water speeds.

There are two main types of turbines in existence - active and reactive. The active type transforms the potential energy of the water into kinetic energy by a stream of water coming from a nozzle and actuation the turbine's propellers. The reactive type, in turn, uses the pressure of the water, as well as its speed, to create power. The working wheel is entirely submerged and thus both pressure and speed are reduced when exiting the turbine. In the opposite case with the active turbine the propellers are actuated by a stream and are in the air.

The most common may be grouped into three categories:

- Kaplan and propeller turbines;
- Francis turbines;
- Pelton and other active turbines.

Kaplan and propeller turbines are axial reactive turbines, usually used for small pressures (usually under 16 m).

Francis turbines are reactive turbines with radial stream, with fixed blades and adjustable angle, which are used for average heights of water pressure.

Pelton turbines are impulse turbines with one or more streams. Each stream passes through a nozzle with a needle valve for stream control. Used for average and high waterfalls.

**Table 13 Range of use of the types of hydro turbines**

<b>Type of turbine</b>	<b>Pressure H [m]</b>
Archimedes' screw turbine	$1.0 < H < 10$
VLH	$1.5 < H < 4.5$
Kaplan	$20 < H < 40$
Francis	$10 < H < 350$
Pelton	$50 < H < 1300$
Turgo	$50 < H < 250$

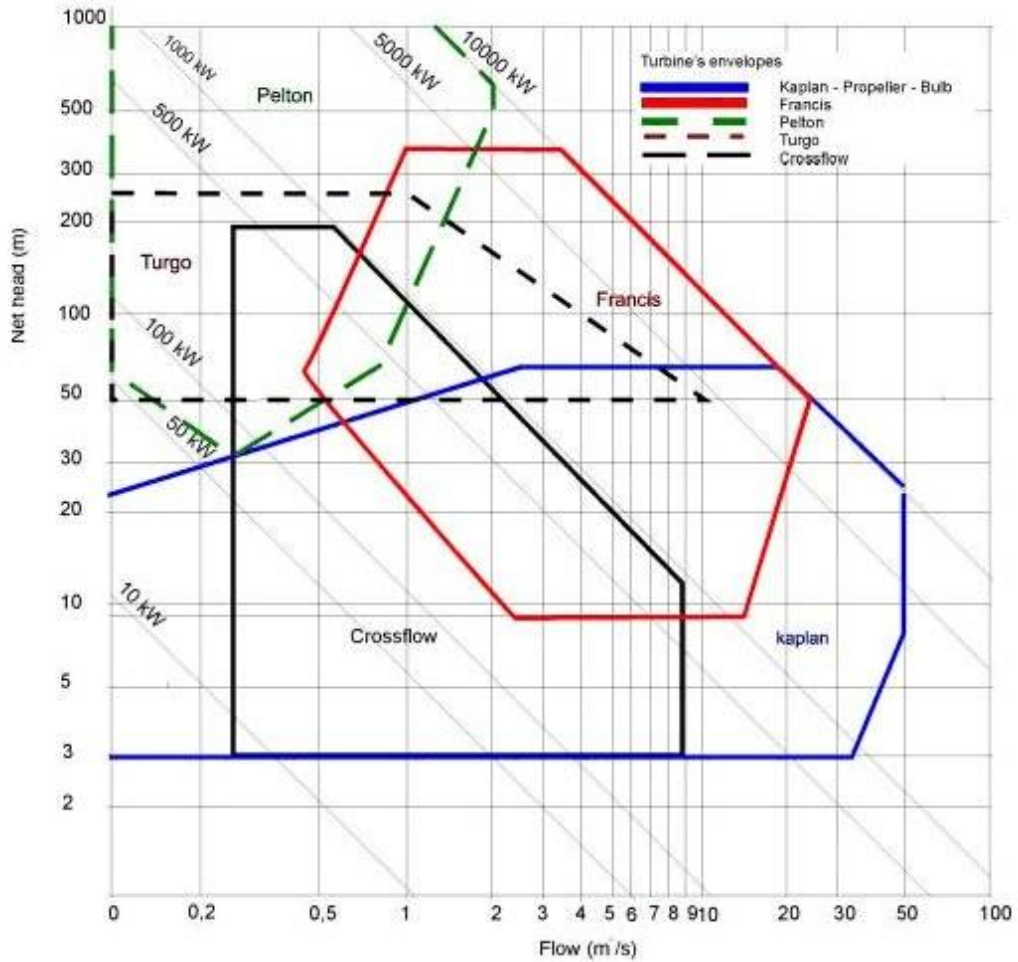


Figure 5. Operation range of hydro turbines

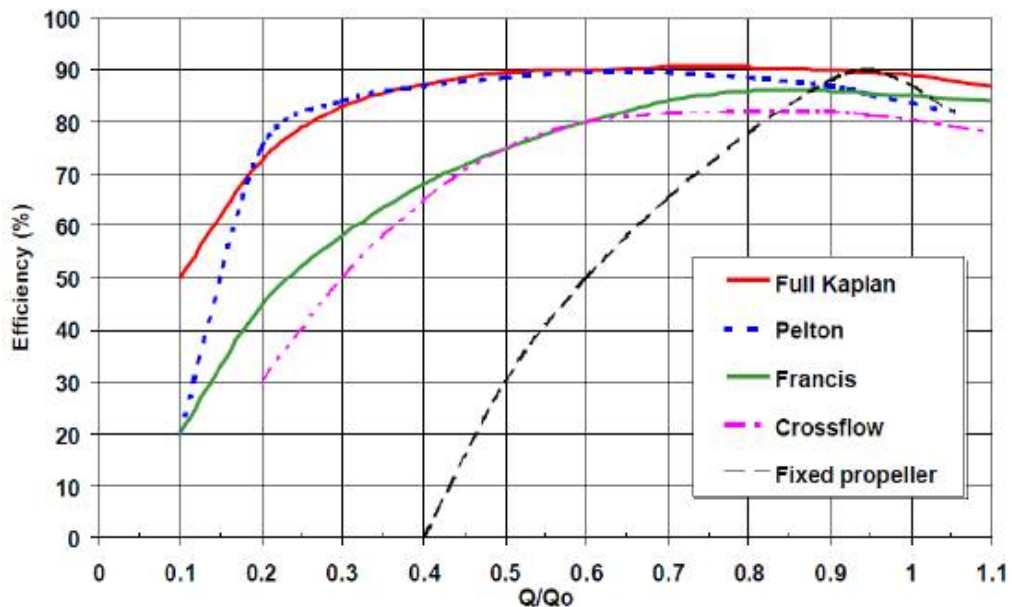


Figure 6. Effectiveness of hydro turbines

For the reviewed section for production of electrical power from RES in Zrnovtsi municipality, and with a view of the main parameters, with which the power plant ( $Q=0.021 \text{ m}^3/\text{s}$  and  $H=80 \text{ m}$ ), the use of a Pelton-type turbine is assumed.

*b) economical viability of the applicable technologies;*

HPPs have small operational and maintenance costs. Their lifecycle is very long and they are extremely reliable from an operational point of view, therefore, this is a secure and well-tested technology. Furthermore, small and mini HPPs have a higher return on investment due to their small investment capital and operational costs for maintenance. They are easier to construct and commission, due to the simplified design, thus keeping the costs low.

The selected turbine will provide high power production and maximum reliability during operation. It has high efficiency even when working with 20% of the constructed water quantity. The technology is very well-known and has proven its qualities worldwide.

The return on investment period for such a project may be defined after a detailed feasibility study containing the necessary data. In most cases this period is within the guaranteed period for buying out the electrical power (7÷9 years).

*c) recommendation of technology;*

"Zrnovtsi 2" Small Hydro Power Plant is being designed to cover electricity consumed by street lighting, the school and municipal buildings.

It will be built on the existing pipeline that draws water from the water tower and brings it to the Treatment plant. The pipeline has a diameter of 225 mm. Annex 2 (Drawings 3, 4 and 5) shows the location of existing and future facilities.

The new plant "Zrnovtsi 2" will be located immediately by the TP, south of it. The existing site is relatively flat and is located 20 m from the building of the TP. Elevation ± 0 00 of the turbine is 2 ÷ 3 m above the TP itself.

#### **4.2.6 Forecast annual production of energy**

The main parameters of the new plant are:

- Pressure: 80 m
- Maximum amount of water - 21 l/s
- Turbine - Pelton
- Maximum power - 13,4 kW
- Average annual power production - 80 000 kWh
- Maximum annual electricity production - 116 640 kWh

#### **4.2.7 Risk assessment**

*a) risk assessment;*

Risk assessment was made for 6 main risk factors, which have the greatest impact on the overall risk assessment:

- Resources - related to the availability of the power carrier - hydro resources. High waters. low waters - aridity, drought, drawing away waters at a higher elevation;
- Technical - including: development and implementation of the investment designs;
- Investment - including: price, costs, financing;
- Operation - achieving the foreseen results (ex. planned prime cost of electrical power from RES, a risk related to the functioning of the site);
- Environment and perception - impact on the environment. Aesthetical perception. Political - related to changes in the national policy concerning RES

*b) recommendations for management of risks;*

Recommendations for management of the separate types of risks are given in Table 14. Due to the fact that each separate investment project is unique on its own, a specific risk assessment must be made and specific measures for minimizing them must be laid out.

**Table 14 Types of risks related to HPP and their management**

<b>№</b>	<b>Type of risk</b>	<b>Management</b>
1	<b><u>Resources</u></b>	
	Unfavorable climatic conditions - minimum and maximum water quantities	Unmanageable
2	<b><u>Technical</u></b>	
	Development and implementation of the investment designs;	References for design teams
	Quality of equipment	References for suppliers; Negotiating long warranty periods for functionality of installations and achieved project parameters
	Quality of installation	References of installation company
3	<b><u>Investment</u></b>	
	Price of technology; Cost price of produced energy	Feasibility analyses. Assessment of static and dynamic financial and economic indicators. Evaluation of market potential
	Opportunity for ensuring acceptable grant scheme for implementation of the project	Development of a quality investment design and project proposal for application under the relevant grant scheme
	Opportunities for ensuring own co-financing and eventual bank loan	Well-developed business plan. Awarded project for grant financing under an European Programme, guaranteeing better loan conditions. Well-developed schedule, related to delivery periods and periods for receiving funds.
4	<b><u>Operational</u></b>	
	Maintenance frequency	Automated monitoring and management system
	Guaranteed result from operation	Staff training
	Opportunity for delivery of spare parts	Contracts for warranty and post-warranty maintenance
	Encroachment upon the facilities	Security, Insurance
5	<b><u>Environment and perception</u></b>	
	Impact on the environment; Perception by the public; Influence on the local economy	EIA and preventive measures during construction and operation
6	<b><u>Political</u></b>	
	Change of legislation; Change in the mechanism for purchasing of electrical energy; Introduction of new rules and ordinances	Unmanageable risk; Close monitoring of the dynamics of the process and, if possible, signing long-term contracts for purchasing of electrical energy

#### 4.2.8 Evaluation of information reliability

For the purposes of definition of the potential for production of electricity, no additional on-the-spot measurements have been made for the selected production area. The available information about the water quantities and mapping materials are entirely sufficient for defining the parameters of the future power plant with the necessary accuracy for this type of research and no additional measurements need to be done.

The used data sources, mapping materials, etc, provide enough guarantees of the correctness and authenticity of the input data and project results.

### 4.3 ENERGY FROM BIOMASS

#### 4.3.1 Assessment of the area

The total area of the municipality is 51 764 ha, split as follows: 28 483 ha is Zrnovtsi village, 14 522 ha is Morodvis village; 8759 ha is Vidovishte village.

Forests cover 3034 ha.

Total arable land is 1 692 ha. Main crops are:

- Maize - sown area of 300 ha, yield 7000 kg/ha;
- Wheat - sown area of 90 ha, yield 2000 kg/ha;
- Rice - sown area of 90 ha, yield 5000 kg/ha.

Horticultural crops are grown of which mainly peppers, leek and pink tomatoes. Fruit-growing and viticulture are underdeveloped with production meant for own consumption of the population. Plums, peaches, cherries and pears are grown.

Animal breeding is less developed, split by villages as follows:

1. Morodvis village:
  - Cows – 700 heads;
  - Sheep – 400 heads;
  - Horses – 20 heads ;
  - Pigs – 150 heads;
  - Goats – 20 heads.
2. Vidovishte village:
  - Cows – 180 heads;
  - Sheep – 1050 heads;
  - Horses – 10 heads ;
  - Pigs – 200 heads;
  - Goats – 300 heads.
3. Zrnovtsi village:
  - Cows – 700 heads;
  - Sheep – 30 heads;
  - Horses – 40 heads ;
  - Pigs – 750 heads;
  - Goats – 600 heads.

There are one large and two smaller companies for wood processing in the municipality, with a capacity of up to 150 m<sup>3</sup> of beams and planks.

According to Zrnovtsi Municipality data biomass is collected annually from waste products from agriculture, animal breeding and wood processing, split in quantities as follows:

- Sawdust after treatment of wood - about 1800 kg;
- Pieces of wood - about 450 kg;
- Straw - 1000 kg/ha, in total 390 000 kg;
- Corn stalks - 1500 kg/ha, a total of 300 000 kg;
- Stem and foliage after harvesting of tomatoes and other vegetables - 6800 kg total;
- Waste of vines - 2500 kg;

Out of wood and vines waste material pellets can be produced whose energy value does not exceed 20 000 kWh per year. Production of pellets or briquettes will have primarily environmental effect in view of utilization of this waste.

In defining the areas for construction of plants for biomass utilization distances between the potential equipment and the biomass source were taken into account in view of minimizing transportation costs and procedures for connection. For the possible sources for utilization of biomass, in particular biogas, cogeneration installation is suggested. Essentially these are internal combustion engines powered by biogas where heat and electricity are obtained as a final product. The advantages of these systems are high efficiency of utilization of primary energy and their capacity to produce electricity that could be sold at preferential prices under the current EU legislation. Due to these peculiarities, cogeneration with inner combustion engines is also commonly used in landfills, wastewater treatment plants and farms.

We suggest following potential areas for:

- Cogenerator fuelled by biogas produced from manure collected in the three villages in the municipality. It is necessary to construct the necessary connection of the biogas production facilities to the electric network, as well as connection to the heating network of municipal buildings. The heat distribution network may have to be reconstructed with a view of the fact that the heat source - hot water for domestic purposes will be one - the cogenerator facility. The existing ways for hot water supply, if any, will remain and will be used to cover peak heat loads during the winter period. Electricity could be sold or used to cover the own needs of the municipal buildings. Depending on the intended designation of the heat and energy produced, the specific location can either be in immediate proximity to farms or close to consumers, provided that in the latter case collection and disposal of manure is organized.
- Cogenerator fuelled by biogas produced from sewage sludge collected in the WWTP after its construction is finished. The construction site of this cogeneration installation will be next to the future treatment plant. Relevant facilities for biogas production need to be constructed. The point of connection of the cogenerator to the electricity distribution network will determine the possible additional investment in electrical cables and construction of the necessary heating pipeline.
- Installations for the production of biodiesel from rapeseed and paulownia. There are no specific requirements in terms of location of the plant for biodiesel. Location of such a plant can be chosen based on the specific conditions in the municipality (ownership of land, proximity to infrastructure, etc.), as well as the access to raw materials.

#### **4.3.2 Evaluation of the resource**

Evaluation of the resource was made on the basis of the existing opportunities and the availability of biomass in the municipality. Thus, several main raw materials for energy production have been defined - rapeseed and paulownia for biodiesel, sawdust and straw for heating, manure and sludge from the wastewater treatment plant for biogas.

#### **4.3.3 Evaluation of the potential**

##### **Rapeseed and paulownia for production of biodiesel:**

For the production of industrial biomass like rapeseed, paulownia and others, the municipality has at its disposal an area of 65 ha.

For sowing of rapeseed in Zrnovci municipality an area of 15 ha has been allocated. It should produce circa 6 315 kg of oil, i.e. 66 310 kWh/g energy.

For sowing of paulownia 50 ha has been allocated.

Quantity of expected yield may vary per hectare and it depends on several factors. The first factor is the choice of plant variety, location, weather conditions, supplementary irrigation and all other factors normally affecting traditional crops. Expected yields of paulownia can vary in the range 30-40 dt / ha/year or up to 80 dt / ha with two-year rotation cycle.

Measured in energy units, dry weight paulownia has an energy content of about 18 MJ per kilo or 42% of the energy contained in an equivalent volume of light fuel. This sets the yield from ha per year as an equivalent to 12,000 ÷ 17,000 liters of fuel from ha. The financial effect can easily be calculated.

The 50 ha of land set for growing of paulownia will yield 850,000 liters of fuel per year, or energy amounting to 8.925 million kWh per year.

The theoretical potential is 89 000 MWh/year, while the technical potential is 8925 MWh / year.

#### **Sludge from wastewater treatment plant for the production of biogas:**

Upon visiting the municipality of Zrnovtsi it became clear that there is an ongoing project for treatment plant for wastewater in the municipality. In executing this project, out of the sludge from the treatment plant approx. 390 000 m<sup>3</sup> of biogas could be produced, which is about 2 535 000 kWh per year. This determines the power of a boiler or a cogenerator at 300 kW with annual work load of about 8000 hours.

The theoretical potential is 25 000 MWh / year, while technical potential is 2535 MWh/year

#### **Straw and manure for biogas production:**

The total possible production of biogas from manure on the farms of the municipality is about 190 m<sup>3</sup>/h or 1 200 kW. Straw has an energy value of about 23 000 kWh per year. Since it is used for animal bedding it should be used in conjunction with manure for biogas production. Energy value of the produced biogas is estimated at around 2,847,000 kWh per year. This would ensure the operation of a boiler or a cogenerator with a power of 350 kW for 8000 hours work load on annual basis. The risk lies in the organization of delivering manure to the biogas production plant.

Stalks of corn are used for silage. If there are any silage leftovers they can be used for biogas production. The effect would only be environmental.

Stems and foliage of tomatoes and other vegetables could contribute to the production of biogas by about 600 m<sup>3</sup> per year, which would also be only an environmental effect.

Technological potential is about 2847 MWh per year, and theoretical is about 30 000 MWh per year.

The lower part of the range of calorific value of biogas depends on the content of methane (50% ÷ 70%) and is in the range of 6 ÷ 8 kWh/m<sup>3</sup>.

If residues of crops are measured after the harvest an additional quantity of the produced biogas can be determined, whereas the extraction of biogas from tonne of organic dry matter is:

- Fresh alfalfa 350 m<sup>3</sup>
- Grass 550 m<sup>3</sup>
- Straw 340 m<sup>3</sup>
- Tree leaves 250m<sup>3</sup>
- Corn stalks 420 m<sup>3</sup>
- Dairy waste 630 m<sup>3</sup>
- Sewage waters 600 m<sup>3</sup>

### **4.3.4 Technologies for utilization of the evaluated resource potential**

#### **Production of biogas**

For the production of biogas in the municipality a bioreactor needs to be built on a previously researched and approved site, near sources of organic waste. A major problem is that

consistency in the collection and production of manure from individual farms in Zrnovci municipality needs to be ensured. Disposal should be done regularly and in an organized manner.

- Out of one ton of manure from cattle between 200 ÷ 350 m<sup>3</sup> of biogas are obtained with a methane content of 60%;
- Out of one ton of plants 300 ÷ 630 m<sup>3</sup> of biogas are obtained with a methane content up to 70%;

### Biodiesel production

For the production of biodiesel in the municipality a refinery for biodiesel must be built at a previously researched, approved and coordinated location, with the relevant infrastructure. The main point which should be accounted for is the negotiation of regular supply of raw materials.

#### 4.3.5 Forecast annual production of energy

The forecast annual quantities of energy are equal to the technological potential, on the condition that the requirements and particulars of production are observed:

For biogas from the wastewater treatment plant - 2 535 MWh/year;

For straw - 23 MWh/year;

For biodiesel - 8 925 MWh/year;

#### 4.3.6 Risk assessment

Recommendations for management of the separate types of risks are given in Table 15. Due to the fact that each separate investment project is unique on its own, a specific risk assessment must be made and specific measures for minimizing them must be laid out.

**Table 15 Types of risks related to biomass and its management**

<b>№</b>	<b>Type of risk</b>	<b>Management</b>
1	<b>Resources</b>	
	Loss of lumber: – fires; – snow-crush damages; – dry tops and branch cutting – rotting; – damages by insects; – grazing; – poaching.	Fires caused by man can be limited through amendments in the penal legislation in the area, through larger-scale organization of forestry and firefighting services for their containment, fighting poaching, etc.
	Security of deliveries, forecast resources, storage	Supply contracts, building storage facilities
2	<b>Technical</b>	
	– changes existing technologies with new ones (investment); – existing competitive technology (cost-effectiveness);	
	Development and implementation of the investment designs;	References for design teams
	Quality of equipment	References for suppliers;

№	Type of risk	Management
		Negotiating long warranty periods for functionality of installations and achieved project parameters
	Quality of installation	References of installation company
3	<p><b><u>Investment</u></b></p> <p>Price of technology; Cost price of produced energy.</p> <p>Opportunity for ensuring acceptable grant scheme for implementation of the project</p> <p>Opportunities for ensuring own co-financing and eventual bank loan</p>	<p>Feasibility analyses. Assessment of static and dynamic financial and economic indicators. Evaluation of market potential</p> <p>Development of a quality investment design and project proposal for application under the relevant grant scheme</p> <p>Well-developed business plan. Awarded project for grant financing under an European Programme, guaranteeing better loan conditions. Well-developed schedule, related to delivery periods and periods for receiving funds.</p>
4	<p><b><u>Operational</u></b></p> <p>Maintenance frequency</p> <p>Guaranteed result from operation</p> <p>Process maintenance, repairs and supply of spare parts</p> <p>Encroachment upon the facilities</p>	<p>Automated monitoring and management system</p> <p>Staff training</p> <p>Contracts for warranty and post-warranty maintenance</p> <p>Security, Insurance</p>
5	<p><b><u>Environment and perception</u></b></p> <p>Impact on the environment; Perception by the public; Influence on the local economy</p>	<p>EIA and preventive measures during construction and operation</p>
6	<p><b><u>Political</u></b></p> <p>Change of legislation; Introduction of new rules and ordinances; Environmental restrictions and prohibitions</p>	<p>Unmanageable risk;</p>
7	<p><b><u>Market</u></b></p> <p>Migration of users; Changes in preferential prices</p>	<p>Unmanageable risk; Close monitoring of the dynamics of the process and, if possible, signing long-term contracts for purchasing of electrical energy</p>
8	<p><b><u>Financial and economic risk</u></b></p>	<p>Unmanageable risk;</p>

#### 4.3.7 Evaluation of information reliability

For the preparation of this section of the report, no additional measurements have been made at the relevant terrains in the municipality, but publicly accessible data has been used with history from state and municipal services, as well as data collected from the municipality.

In order to receive more accurate and up-to-date information it is necessary to make a research and measurement on-the-spot and to collect data of the specific area. This is the working objective during the development of a detailed works design for the relevant RES.

## 4.4 SOLAR ENERGY

### 4.4.1 Assessment of the area

The considered sites concern flat areas, as mountainous terrains would encumber the project and make it more expensive.

#### ➤ Area 1

Area 1 is provisionally named Zrnovci 1, in the area of Zrnovci village.

#### ❖ Geographic coordinates

The exact coordinates of the area are shown below, as well as satellite images and photos.

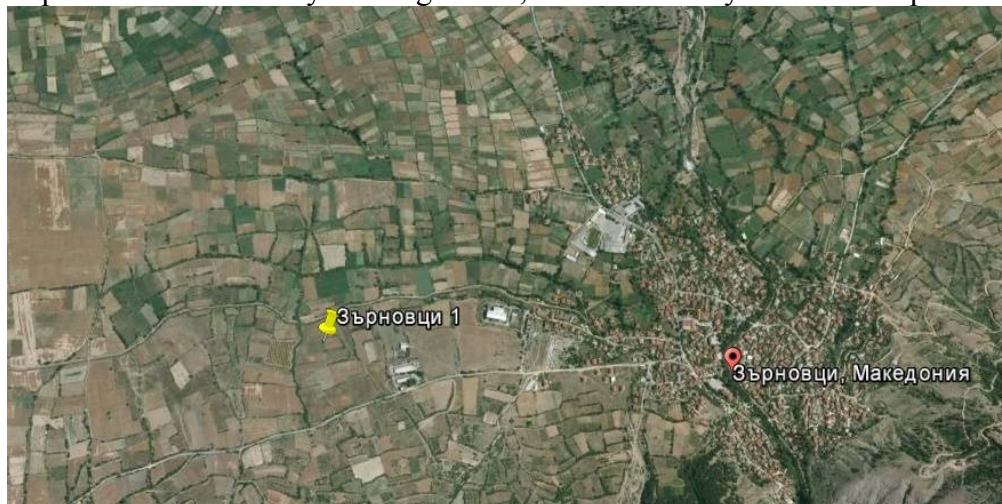
N 41°51'17.11"

E 22°25'49.64"

Altitude - 370 ÷ 375 m.

The distance from the area to the center of Zrnovtsi village is about 2 km, immediately on the main road connecting the village with other settlements in the municipality; from the capital Skopje distance is 125 km.

The place is dominated by low vegetation, as evidenced by the attached photos.



The location was selected so that it is accessible for installation and operation, near asphalt or passable road, with the ability to facilitate the work of machines. No danger of damming, swamping and fogging.

There is no danger of shading either, as the horizon is clear both to the east and the west.

The soil is firm and able to bear concrete foundations on the surface or in non-freezing depth. In the preliminary survey no signs of shallow underground rocks were found, which makes installation of constructions on pile-driven steel poles or screws possible.

Exact conditions of installation will be clear after a detailed geological survey of the soil.

➤ **Area 2**

Area 2 is provisionally named Vidovishte (because of its proximity to Vidovishte village), for easier identification on the pictures and in the calculations done.

❖ **Geographic coordinates**

The exact coordinates of the area are shown below, as well as satellite images and photos.

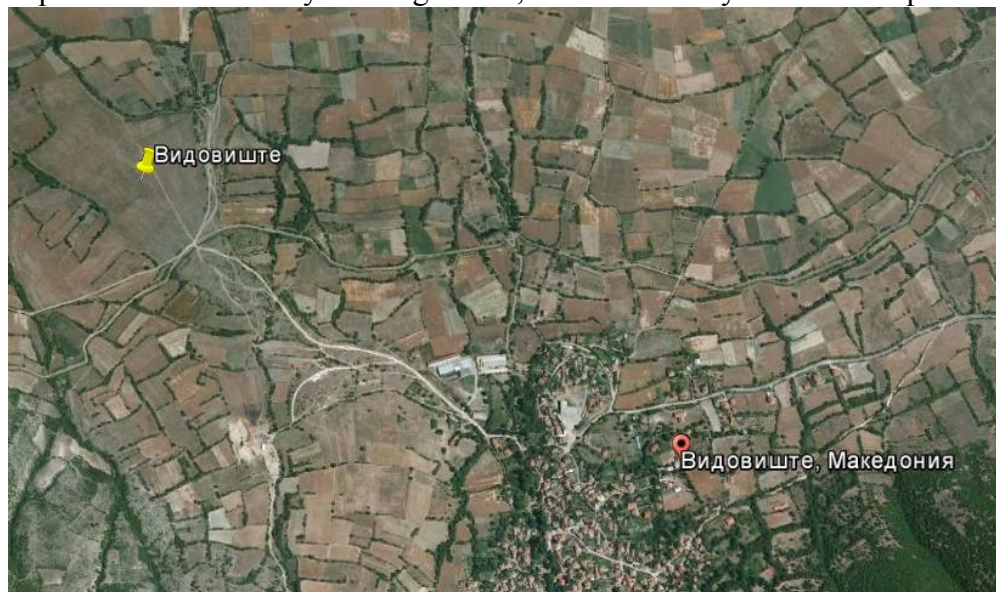
N 41°51'5.11"

E 22°23'15.36"

Altitude - 330 m. Ventilated area, which will provide better cooling of the modules at higher temperatures of the environment during the summer months.

The distance from the area to the center of Vidovishte village is about 2 km, distance from capital Skopje is 100 km, it is near the asphalt road connecting the settlements in the municipality.

The place is dominated by low vegetation, as evidenced by the attached photos.



The location was selected to be easily accessible for installation and operation, close to asphalt road to facilitate the work of machines. Large leveling or removal of earth are not required. It is located close to Bregalnitsa river which could be a prerequisite for the formation of fog, thus power productivity might be reduced.

There is no danger of shading because the horizon is relatively clear to the east and west.

In the preliminary survey no signs of shallow underground rocks were found, which makes installation of constructions on pile-driven steel poles or screws possible.

Exact conditions of installation will be clear after a detailed geological survey of the soil.

#### 4.4.2 Evaluation of the resource

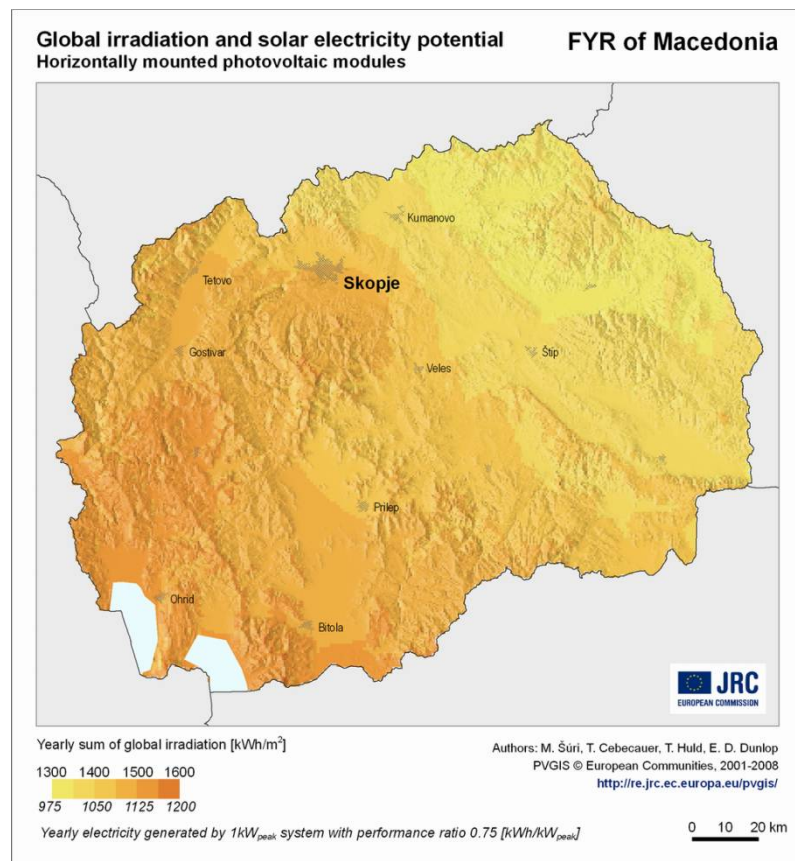
For defining the solar energy resource were used the models embedded in the following websites, as well as licensed analysis software:

- [Photovoltaic Geographical Information System \(PVGIS\)](http://www.re.jrc.ec.europa.eu/pvgis/) – [www.re.jrc.ec.europa.eu/pvgis/](http://www.re.jrc.ec.europa.eu/pvgis/) - updated version PVGIS- CMSAF (data on the period from 2006 to 2010 is included)
- METEONORM – Global database on solar radiation;
- [www.meteonorm.com](http://www.meteonorm.com);
- NASA – Database on meteorology and solar energy – [www.eosweb.larc.nasa.gov/cgi-bin/sse/grid.cgi](http://www.eosweb.larc.nasa.gov/cgi-bin/sse/grid.cgi)
- PVSyst V5.20 – Computer program for research/study, measuring, simulations and analysis of data of entire photovoltaic systems.

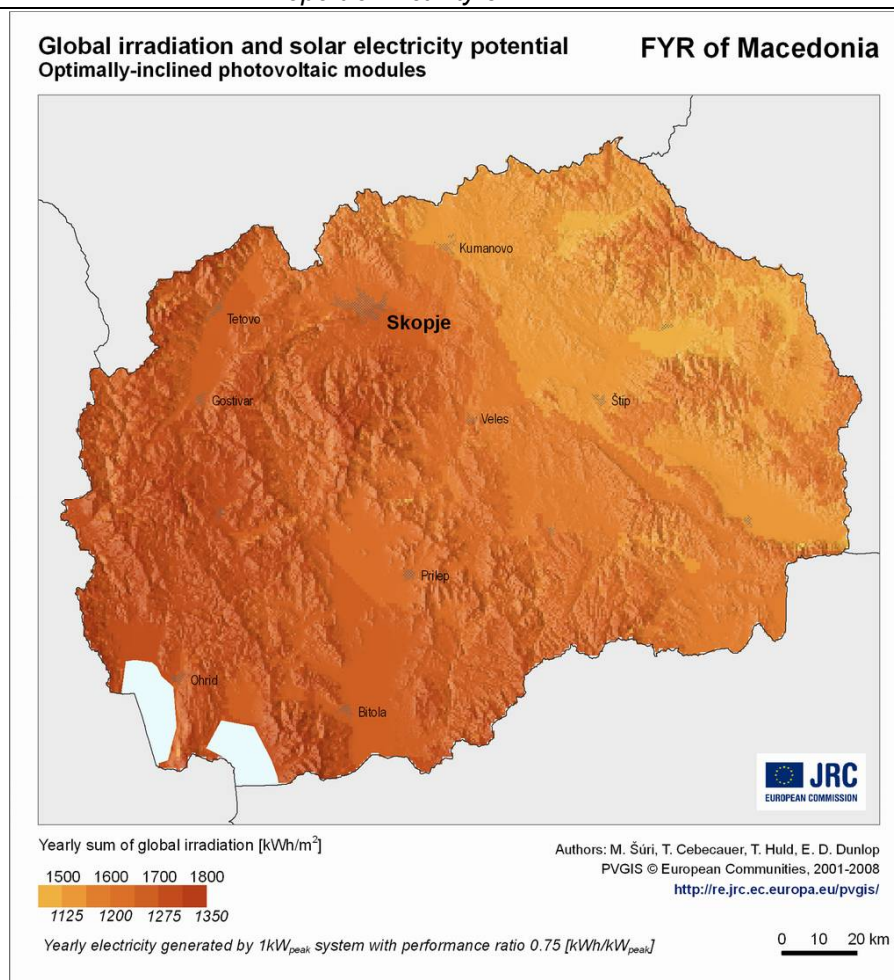
#### 4.4.3 Evaluation of the potential

The electrical energy generated by the photovoltaic installation will be fed to the electrical transfer grid. Macedonia as a whole is rich in solar resources, but it is unevenly distributed on its territory, and the quality of solar radiation is different.

This necessitates the carrying out of a solar energy audit evaluating the solar radiation as a resource for production of electrical energy.



Potential of the solar radiation for horizontally-mounted modules



Potential of the solar radiation for optimal incline of the modules

The annexes above show that the reviewed municipality has relatively low values - between 1125 and 1500 kWh/m<sup>2</sup>.

Production of energy by the photovoltaic power plant is directly influenced by the geographical position of the site, the daily dose of radiation reaching it and the index of transparency.

Solar energy is the energy that reaches a unit of surface for a unit of time. Measurement unit is kWh/m<sup>2</sup> per day.

Index of transparency of the air reflects the solar radiation reaching the Earth surface from the atmosphere which has a value of between 0 and 1.

High index of transparency means that the air has a high level of cleanliness and there are no obstacles for the solar radiation.

Geographical latitude of the site defines the amount of solar radiation and impacts the measuring of strings of the photovoltaic system.

The considered sites concern flat areas, as mountainous terrains would encumber the project and make it more expensive.

The theoretical data and calculations of the solar radiation and the data of its distribution for a static metal construction and such with a tracking system for Area 1 and Area 2 are provided in Annex 7.

#### 4.4.4 Technologies for utilization of the evaluated resource potential

The used technologies are provided in Annex 8.

#### 4.4.5 Forecast annual production of energy

Based on the results obtained and the recommended technology, the economic forecasts envisage the following average annual production:

For Area 1:

Technology	<i>PVGIS-CMSAF</i>
Crystal	1720 kWh/kWp
Losses registered in the system for 1kW:	
- Temperature losses:	8.6%
- Losses from reflections:	2.8%
- Losses in cables, invertors, transformers etc.:	10%
Thin-ply	1720 kWh/kWp
Losses registered in the system for 1kW:	
- Temperature losses:	1.0%
- Losses from reflections:	2.8%
- Losses in cables, invertors, transformers etc.:	10%

For Area 2:

Technology	<i>PVGIS-CMSAF</i>
Crystal	1700 kWh/kWp
Losses registered in the system for 1kW:	
- Temperature losses:	9.2%
- Losses from reflections:	2.7%
- Losses in cables, invertors, transformers etc.:	10%
Thin-ply	1700 kWh/kWp
Losses registered in the system for 1kW:	
- Temperature losses:	0.9%
- Losses from reflections:	2.7%
- Losses in cables, invertors, transformers etc.:	10%

#### 4.4.6 Risk assessment

Recommendations for management of the separate types of risks are given in Table 16. Due to the fact that each separate investment project is unique on its own, a specific risk assessment must be made and specific measures for minimizing them must be laid out. The main risks are:

- Snow - danger from accumulation of snow on the panel surfaces, leading to reduction and termination of energy production.
- Wind - danger of compromising the load-bearing construction, which may lead to breaking off and falling of the panels.
- Future shading - danger from shading by buildings and facilities built subsequently in the vicinity of the solar park.

**Table 16 Types of risks related to photovoltaics and their management**

№	Type of risk	Management
1	<p><b><u>Resources</u></b></p> <p>Shading;</p> <p>Cloudiness.</p>	<p>The construction site of the photovoltaic park must be selected so as to be at a sufficient distance from properties under construction and within regulation; Unmanageable</p>
2	<p><b><u>Technical</u></b></p> <ul style="list-style-type: none"> <li>- changes existing technologies with new ones (investment);</li> <li>- existing competitive technology (cost-effectiveness);</li> </ul> <p>Development and implementation of the investment designs;</p> <p>Quality of equipment</p> <p>Quality of installation</p>	<p>References for design teams</p> <p>References for suppliers; Negotiating long warranty periods for functionality of installations and achieved project parameters</p> <p>References of installation company</p>
3	<p><b><u>Investment</u></b></p> <p>Price of technology; Cost price of produced energy.</p> <p>Opportunity for ensuring acceptable grant scheme for implementation of the project</p> <p>Opportunities for ensuring own co-financing and eventual bank loan</p>	<p>Feasibility analyses. Assessment of static and dynamic financial and economic indicators. Evaluation of market potential</p> <p>Development of a quality investment design and project proposal for application under the relevant grant scheme</p> <p>Well-developed business plan. Awarded project for grant financing under an European Programme, guaranteeing better loan conditions. Well-developed schedule, related to delivery periods and periods for receiving funds.</p>
4	<p><b><u>Operational</u></b></p> <p>Maintenance frequency</p> <p>Snow coverage</p> <p>Strong gusts of wind</p> <p>Guaranteed result from operation</p> <p>Process maintenance, repairs and supply of spare parts</p> <p>Encroachment upon the facilities</p>	<p>Automated monitoring and management system</p> <p>Photovoltaic panels must be mounted on constructions at such a height as to ensure that snow cover remains always underneath them.</p> <p>Constructions and supporting elements must be sized in such a manner as to sustain even the strongest winds, according to the meteorostatistics of the region.</p> <p>Staff training</p> <p>Contracts for warranty and post-warranty maintenance</p> <p>Security, Insurance</p>
5	<p><b><u>Environment and perception</u></b></p> <p>Impact on the environment; Perception by the public; Influence</p>	<p>EIA and preventive measures during construction and operation</p>

<b>№</b>	<b>Type of risk</b>	<b>Management</b>
	on the local economy	
6	<b>Political</b> Change of legislation; Introduction of new rules and ordinances; Environmental restrictions and prohibitions	Unmanageable risk;
7	<b>Market</b> Changes in preferential prices	Close monitoring of the dynamics of the process and, if possible, signing long-term contracts for purchasing of electrical energy
8	<b>Financial and economic risk</b>	Unmanageable risk;

#### 4.4.7 Evaluation of information reliability

For the preparation of the solar energy section of the report, no additional measurements have been made at the relevant terrains in the municipality, but publicly accessible data has been used with history from state and municipal services, as well as the use of specialized software..

In order to receive more accurate and up-to-date information it is necessary to make a research and measurement on-the-spot and to collect data of the specific area for at least one year. This is the working objective during the development of a detailed works design for the relevant RES.

## 4.5 WIND ENERGY

### 4.5.1 Assessment of the area

Before a wind system is installed, the existence of sufficient potential for its operation should be verified. Necessary information could be taken from statistical reports or own measurements of the indicators in the selected site could be done.

Locations selected for the installation of wind turbines have been picked according to the theoretical rationale of Bulgarian Academy of Science (return on investment at over 1 000 m above sea level and a certain wind speed), as well as based on their accessibility for transportation and installation of machinery.

#### ➤ Area 1

(provisionally named WindGenerator1)

#### ❖ Geographic coordinates

The exact coordinates of the Area are shown below, as well as satellite images and photos.

N 41°50'58.52"

E 22°22'42.10"

Altitude 352 m.

The distance from the area to the center of Vidovishte village is about 2 km, distance from capital Skopje is 100 km, it is near the asphalt road connecting the settlements in the municipality.



The selected location is easily accessible for installations and operation. It is close to a relatively passable asphalt road which facilitates the work of heavy machines.

The soil is firm and able to bear concrete foundations on the surface or in non-freezing depth.

Exact conditions of installation will be clear after a detailed geological survey of the soil.

➤ **Area 2**

(provisionally named WindGenerator2)

❖ **Geographic coordinates**

The exact coordinates of the Area are shown below, as well as a satellite image.

N 41°50'25.58"

E 22°23'20.45"

Altitude 550 m.

The distance from the area to the center of Vidovishte village is about 2 km, distance from capital Skopje is 100 km, it is near the asphalt road connecting the settlements in the municipality.



The selected location is easily accessible for installations and operation. It is close to a relatively passable asphalt road which facilitates the work of heavy machines.

The soil is firm and able to bear concrete foundations on the surface or in non-freezing depth.

Exact conditions of installation will be clear after a detailed geological survey of the soil.

#### 4.5.2 Evaluation of the resource

For defining the wind energy resource were used the models embedded in the following websites:

- [www.meteonorm.com](http://www.meteonorm.com);
- NASA – Database on meteorology and solar energy – [www.eosweb.larc.nasa.gov/cgi-bin/sse/grid.cgi](http://www.eosweb.larc.nasa.gov/cgi-bin/sse/grid.cgi)

#### 4.5.3 Evaluation of the potential

Wind and the energy produced thereof prove to be attractive for a several reasons - it is abundant, cheap, practically inexhaustible source of energy; it does not lead to pollution and climatic anomalies. In short, it has qualities with which none of the traditional energy sources for production of electricity may boast about.

Operational expenditures or rather, the absence thereof, for purchasing fuels in production of energy, make the wind as an energy source, especially attractive for investments.

In Macedonia there is an existing potential for construction of wind parks in the plain areas and in places above 1000 meters. The future development in suitable mountain areas and such with lower wind speeds depends on the implementation of new technical solutions.

The operation of the turbine depends on the speed and turbulence of the wind, the height of the tower and density of the air, therefore it is important to know the potential in the area of the country selected for installation, as well as the conditions in which it was established.

The accessible energy potential of the wind energy is defined after taking into account of the following main factors:

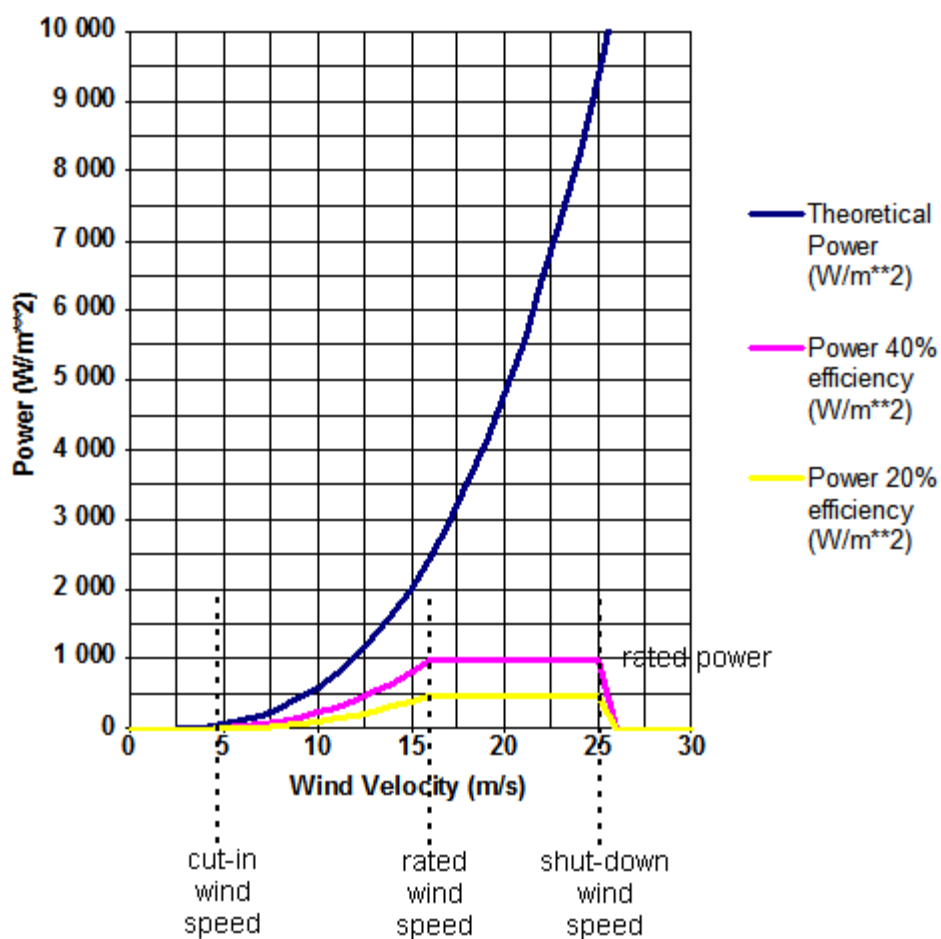
- highly difficult construction and operation of wind facilities in urbanized territories, reserves, military bases and other specific territories;
- uneven distribution of wind energy resource during the separate seasons of the year;
- physic-geographic peculiarities of the country's territory;
- technical requirements for installation of wind generator facilities.

The main shortcoming is also the peak energy production from wind generators is around 4 o'clock in the morning when the consumption is the smallest.

Theoretical and technical potential cannot be determined without additional measurements on the spot taken for at least a year.

At this stage there is not sufficient information hence specific data cannot be provided.

#### 4.5.4 Technologies for utilization of the evaluated resource potential



Most turbines are designed to switch off at speeds above 25-30 m/s to avoid damage. More powerful turbines switch on at wind speeds above 5 m/s.

The spatial distribution of wind energy is based on lines and surfaces of same values of the power stream density expressed in classes. In Table 17 are indicated seven wind classes according to the wind energy stream with the characteristic parameters defined at two different elevations  $h=10$  m above the terrain (at which wind measurements are taken in all meteorological stations in the world) and 50 m.

**Table 17 Wind classes**

Wind class	h = 10 m		h = 50 m	
	Density of power stream, W/m <sup>2</sup>	Wind speed, m/s	Density of power stream, W/m <sup>2</sup>	Wind speed, m/s
1	0...100	0...4,4	< 200	< 5,6
2	100...150	4,4...5,1	200...300	5,6...6,4
3	150...200	5,1...5,6	300...400	6,4...7,0
4	200...250	5,6...6,0	400...500	7,0...7,5
5	250...300	6,0...6,4	500...600	7,5...8,0
6	300...400	6,4...7,0	600...800	8,0...8,8
7	> 400	> 7,0	> 800	> 8,8

Analysis of data in the table shows that at height equal to 50 m, wind stream density is twice as high than at a height of 10 m. At the higher altitude wind speed increases by about 25 % for each wind class. There are interesting variations in the wind parameters at other heights: 30 m and 80 m. It has been proven that the density of energy stream at a height of 80 m is slightly greater than at 50 m: by 10 ÷ 20%, while speed is also higher, but only 1 ÷ 6%. Values of these parameters at 30 m rank between those relating to 10 m and 50 m.

#### 4.5.5 Forecast annual production of energy

In choosing turbines, beside the wind speed, the diameter of the rotor is also taken into consideration.

Turbines of the Enercon and Vestas companies are given as an example:

It is assumed that for the purposes of the calculation made, the speed is 5 m/s, while the height of the tower for the gondola is minimum 70÷75 m.

Company	Machine model	Diameter of the rotor, m	Power, kW
Vestas	V90-1,8/ 2,0 MW	90	95.42
	V110- 2,0 MW	110	142.55
Enercon	E-82 E2 / 2,000 kW	82	79.21
	E-70 / 2,300 kW	71	59.38

At lower wind speed lower power wind generators will be more economical.

On the basis of these data it can be concluded that the forecast annual energy production from wind turbines is less than 1450 kWh/m<sup>2</sup> per year.

#### 4.5.6 Risk assessment

Recommendations for management of the separate types of risks are given in Table 18. Due to the fact that each separate investment project is unique on its own, a specific risk assessment must be made and specific measures for minimizing them must be laid out. The main risks are:

- Birds and bats - danger of collision of animals with the wind generator's blades. In general, this does not influence the integrity of the blades and does not pose a danger to equipment, but has a negative impact on the population of the protected species in particular.
- Noise - danger of exposing the inhabitants of the area to noise levels around 100 dB(A);
- Vibrations - danger of exposing to potentially dangerous levels of vibration, caused by the spinning of the rotor;
- Hurricane winds - danger of developing critical revolutions of the rotor, leading to disintegration of the rotor and/or the entire construction, endangering persons, animals and buildings in the vicinity with strike from flying debris.

**Table 18** Types of risks related to wind parks and their management

№	Type of risk	Management
1	<b>Resources</b>	
	Calm weather	Unmanageable
2	<b>Technical</b>	
	<ul style="list-style-type: none"> <li>- changes existing technologies with new ones (investment);</li> <li>- existing competitive technology (cost-</li> </ul>	

№	Type of risk	Management
	effectiveness);	
	Development and implementation of the investment designs;	References for design teams
	Quality of equipment	References for suppliers; Negotiating long warranty periods for functionality of installations and achieved project parameters
	Quality of installation	References of installation company
3	<b>Investment</b>	
	Price of technology; Cost price of produced energy.	Feasibility analyses. Assessment of static and dynamic financial and economic indicators. Evaluation of market potential
	Opportunity for ensuring acceptable grant scheme for implementation of the project	Development of a quality investment design and project proposal for application under the relevant grant scheme
	Opportunities for ensuring own co-financing and eventual bank loan	Well-developed business plan. Awarded project for grant financing under an European Programme, guaranteeing better loan conditions. Well-developed schedule, related to delivery periods and periods for receiving funds.
4	<b>Operational</b>	
	Maintenance frequency	Automated monitoring and management system
	Flying birds and bats	Construction in areas relatively safe for flying and nesting birds and bats
	Hurricane winds	Although contemporary wind generators are equipped with safety from hurricane winds, as a precaution, the wind park may be positioned outside residential areas.
	Vibrations	Construction in areas with sufficient distance from residential areas
	Noise	Construction in areas with sufficient distance from residential areas
	Guaranteed result from operation	Staff training
	Process maintenance, repairs and supply of spare parts	Contracts for warranty and post-warranty maintenance
	Encroachment upon the facilities	Security, Insurance
5	<b>Environment and perception</b>	
	Impact on the environment; Perception by the public; Influence on the local economy	EIA and preventive measures during construction and operation
6	<b>Political</b>	
	Change of legislation; Introduction of new rules and ordinances; Environmental restrictions and prohibitions	Unmanageable risk;
7	<b>Market</b>	
	Changes in preferential prices	Close monitoring of the dynamics of the process and, if possible, signing long-term contracts for

№	Type of risk	Management
		purchasing of electrical energy
8	<b>Financial and economic risk</b>	Unmanageable risk;

#### 4.5.7 Evaluation of information reliability

For the preparation of the wind energy section of the report, no additional measurements have been made at the relevant terrains in the municipality, but publicly accessible data has been used with history from state and municipal services, as well as the use of specialized software..

In order to receive more accurate and up-to-date information it is necessary to make a research and measurement on-the-spot and to collect data of the specific area for at least one year. This is the working objective during the development of a detailed works design for the relevant RES.

## 4.6 ELECTRICAL CONNECTION OF NEW RES FACILITIES

Reviewing the construction of RES for production of electricity, inevitably we must examine the opportunities for connecting that capacity to the existing power grid or a certain electrical consumer. Accordingly, the voltage levels at which RES capacities are connected, are divided as follows:

- LV - Low Voltage: 0,23/0,4 kV;
- MV - Medium Voltage 10 kV, 20 kV, 35 kV;
- HV - High Voltage: 110kV.

All three voltage levels are possible for connection of new RES capacities, where the choice is determined by:

- The size of the connected capacity;
- The existing constructed power grid;
- The point of connection of the new capacity to the power grid, defined by the relevant electrical company ("MEPSO" AD or "EVN Makedonia" AD).

The points for connection of the new RES capacities are defined following a research by the relevant electrical company ("MEPSO" AD or "EVN Makedonia" AD) concerning the possibility for connecting new RES capacities. The relevant company issues a statement indicating the location and possibility for connecting these capacities.

The possible connection points are:

- The existing constructed power grid, at the relevant voltage levels;
- Existing constructed electrical substations MV/HV, junction stations MV/MV and substations MV/LV.

the manners of connecting new RES capacities are defined after clarification of the exact place for their connection. The possible connection methods are:

- Construction of new power lines (cables or aerial) at the relevant voltage levels, for connection to the existing constructed power grid;
- Construction of the necessary new facilities in the existing power grid, in order to carry out the connection;
- Reconstruction of the existing electrical installations in the MV/HV substations, junction stations MV/MV and substations MV/LV, defined as connection points.
- Construction of the necessary new electrical facilities within the limits (territory) of the new RES capacities, in order to implement the electrical connection.

---

## 4.6.1 Risk assessment

### 4.6.1.1 Risk assessment

*Factors affecting the electrical connection of new RES capacities:*

- Long approval procedures with different stakeholder institutions concerning the construction of new RES capacities;
- Difficulties in the expropriation of private properties affected by the construction of new RES capacities;
- Poor existing infrastructure;
- Poor technical condition of the existing power grid;
- Difficulties in the technical implementation of the electrical connection to the existing power grid;
- Encroachment on the constructed electrical facilities before their putting into operation.

### 4.6.1.2 Recommendations for management of risks;

- The choice of place for constructing the new RES capacities should be considered so as to reduce to the minimum the approval procedures with the stakeholder institutions;
- The choice of place for constructing the new RES capacities should be considered so as to reduce to the minimum the expropriation of affected private properties;
- The choice of place for constructing the new RES capacities should be considered so that the existing infrastructure does not impede the construction of the new capacities;
- The choice of the place for constructing the new RES capacities should be considered so that the existing power grid, to which the connection will be made, is in good technical condition, in order to avoid the necessity for a major reconstruction;
- Overnight security of the constructed electrical facilities until their putting into operation.

## 5 REGULATORY FRAMEWORK AND REFERENCES

- [Law on Energy from Renewable Sources](#)
- [Rules on Applying the Law on Promotion of Investments](#)
- [Law on Energetics](#)
- [Law on Energy Efficiency](#)
- [Decree № ПД-16-558 от 08.05.2012 on collection and provision of information through the National Information System about the potential, production and consumption of energy from renewable sources in Republic of Bulgaria](#)
- [Directive on promotion of use of energy from renewable sources aimed at modification and following revocation of Directives 2001/77/EU and 2003/30/EU](#)
- [Photovoltaic Geographical Information System \(PVGIS\) – \[www.re.jrc.ec.europa.eu/pvgis/\]\(http://www.re.jrc.ec.europa.eu/pvgis/\) - updated version PVGIS-CMSAF \(data on the period from 2006 to 2010 is included\)](#)
- [METEONORM – Global data basis on solar radiation](#)
- [www.meteonorm.com](http://www.meteonorm.com)
- [NASA – Data basis on meteorology and solar energy – \[www.eosweb.larc.nasa.gov/cgi-bin/sse/grid.cgi\]\(http://www.eosweb.larc.nasa.gov/cgi-bin/sse/grid.cgi\)](#)
- [PVSyst V5.20 – Computer program for research/study, measuring, simulations and analysis of data of entire photovoltaic systems.](#)
- [Directive 2009/38/EC on promotion of use of energy from renewable sources aimed at modification and following revocation of Directives 2001/77/EU and 2003/30/EU.](#)
- [Green Paper. European strategy for provision and supply of energy \(COM \(2000\)769\).](#)
- [Biomass action plan \(COM\(2005\) 628\).](#)
- [European strategy on bio fuels \(COM\(2006\) 34\).](#)
- [Energy from renewable sources - guidelines, Renewable energies in 21<sup>st</sup> century : creation of sustainable future COM\(2006\) 848\).](#)
- [Law on Energetics \("State Gazette of Republic of Macedonia" issue 63/2006, 36/2007, 106/2008\).](#)
- [Rules on modes and procedures of establishing and approval of preferential rates of purchasing and sale of electrical power produced by energy production facilities using biogas from biomass as a fuel \("Службен весник на Република Македонија" бр. 142/2007\).](#)
- [Rules on the Renewable Sources of Energy for Production of Electricity \("State Gazette of Republic of Macedonia" issue 127/2008\)](#)
- [Rules on issuance of warranties on the origin of electrical power produced from renewable energy sources \("State Gazette of Republic of Macedonia" issue 127/2008\)](#)
- [Rules on acquisition of status of preferential producer of electrical power from renewable energy sources \("State Gazette of Republic of Macedonia" issue 29/2009\).](#)
- [Agreement on Energy community.](#)
- [Framework Convention of the United Nations on climatic changes from 1997.](#)
- [Kyoto Protocol of 2004.](#)
- [Strategy for development of energetics in Republic of Macedonia in the period 2008-2020, with perspective till 2030, Ministry of Economy of Republic of Macedonia.](#)
- [Base study on renewable sources in Republic of Macedonia, MAHY, 2010.](#)
- [Strategy for energy efficiency of Republic of Macedonia till 2020, Ministry of Economy of Republic of Macedonia](#)
- [Strategy for development in the period 2009-2013 of the East Planning Region](#)